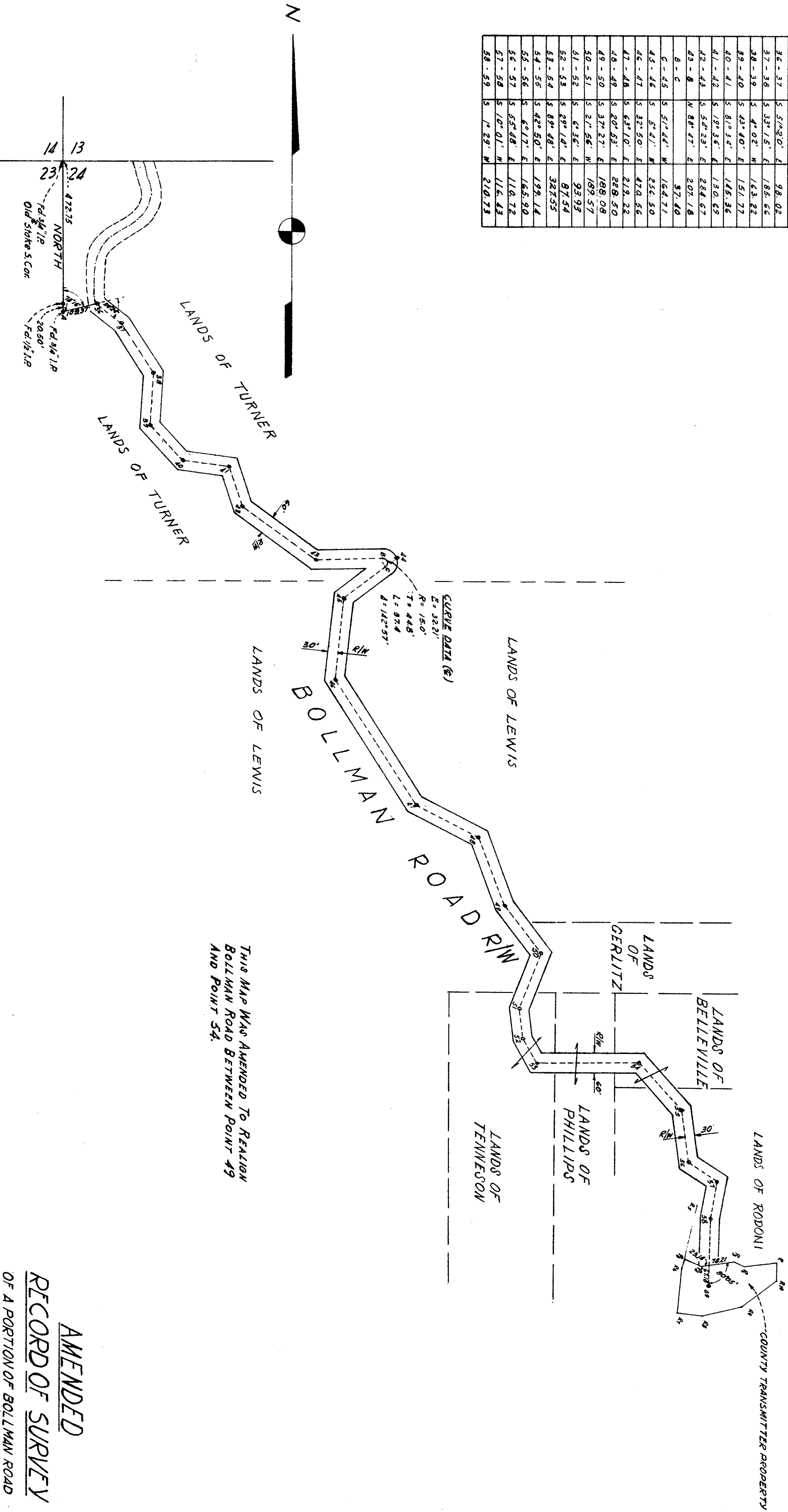


COURSE DATA

COURSE	BEARING	LENGTH (Feet)
A - 36	N 78° 16' E	109.37
36 - 37	S 51° 20' E	98.02
37 - 38	S 33° 45' E	185.66
38 - 39	S 4° 05' W	163.22
39 - 40	S 43° 40' E	151.77
40 - 41	S 81° 34' E	145.36
41 - 42	S 19° 35' E	130.69
42 - 43	S 54° 23' E	284.67
43 - 44	N 84° 47' E	207.18
44 - 45	S 51° 44' W	164.71
45 - 46	S 5° 41' W	256.50
46 - 47	S 32° 50' E	470.66
47 - 48	S 63° 10' E	219.22
48 - 49	S 20° 53' E	228.50
49 - 50	S 37° 27' E	188.08
50 - 51	S 21° 56' W	189.57
51 - 52	S 6° 35' E	93.93
52 - 53	S 29° 14' E	87.54
53 - 54	S 89° 48' E	327.55
54 - 55	S 42° 50' E	199.14
55 - 56	S 6° 17' E	165.90
56 - 57	S 55° 48' E	110.72
57 - 58	S 10° 01' W	116.43
58 - 59	S 1° 29' W	210.73



BASIS OF BEARINGS & NOTES

The bearing North of the section line between Section 23 & Section 24 in Township 8 South, Range 2 West, M.D.M., as shown on map of said sections recorded in Book E of Maps of page 197, in the office of the County Engineer, County of Santa Clara, California, was taken as the basis of bearings shown on this map.

SURVEYOR'S CERTIFICATE

This map correctly represents a survey duly made under my direction in conformance with the requirements of Chapter 15, Division 3, of the Business & Professions Code, at the request of the County of Santa Clara, California in February, 1962.

James T. Pott J.C. STEPHANI
SUPERVISING ENGINEER COUNTY OF SANTA CLARA

COUNTY SURVEYOR'S CERTIFICATE

This map has been examined for conformance with the requirements of Chapter 15, Division 3 of the Business & Professions Code, this 20th day of March, 1962.

JAMES T. POTT, County Surveyor
By *James T. Pott* Deputy

RECORDER'S CERTIFICATE

File No. 2160721
Filed for record this 20th day of March 1962 at 4:10 P.M. in Book 144 of Maps of page 32, at the request of The County of Santa Clara, California.

PAUL TEILH, County Recorder
By *Paul Teilh* Deputy

AMENDED

RECORD OF SURVEY

SANTA CLARA COUNTY, CALIFORNIA
DEPARTMENT OF PUBLIC WORKS
JAMES T. POTT, COUNTY ENGINEER
SCALE 1" = 200' MARCH 1962