

MEMBER DEPTH:

(EXAMPLE: 6" = 600 X 1/100 INCHES)  
ALL MEMBER DEPTHS ARE TAKEN IN 1/100  
INCHES. FOR ALL "T" SECTIONS MEMBER  
DEPTH IS THE INSIDE DIMENSION.

STYLE:

(EXAMPLE: STUD OR JOIST SECTION = S )  
THE FOUR ALPHA CHARACTERS UTILIZED  
BY THE DESIGNATOR SYSTEM ARE:

S = STUD OR JOIST, T = TRACK, U = CHANNEL, F = FURRING

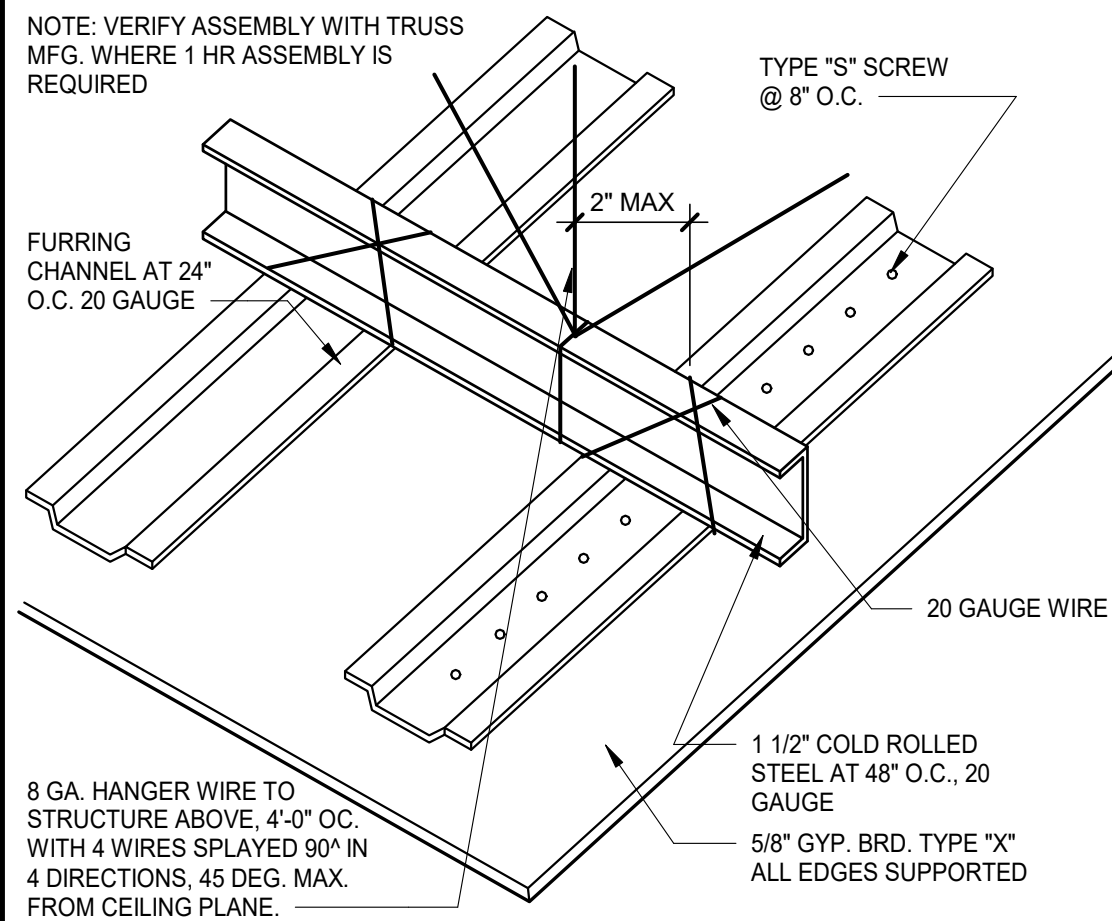
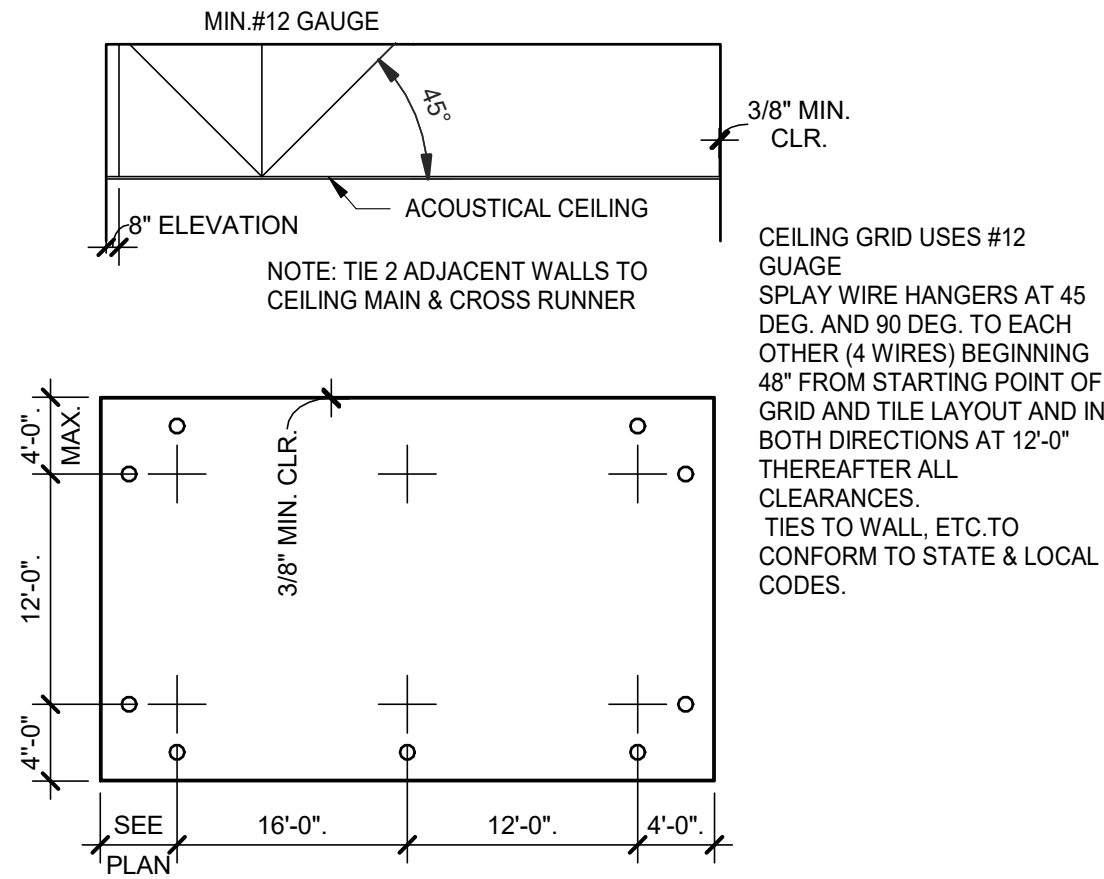
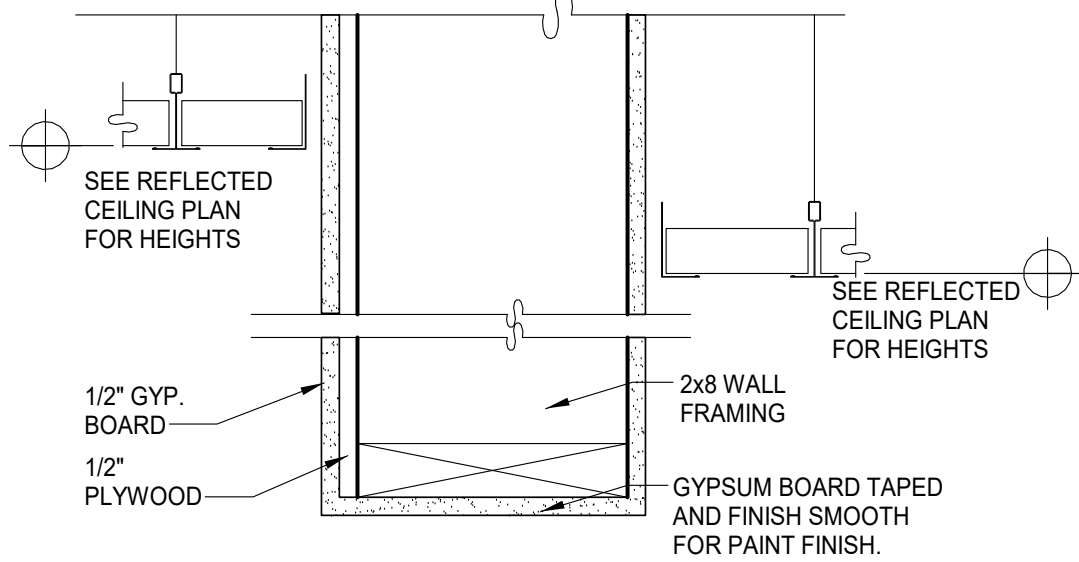
FLANGE WIDTH:

(EXAMPLE:  $1 \frac{5}{8}'' = 1.625'' \sim 162$   
X 1/100 INCHES) ALL  
FLANGE  
WIDTHS ARE TAKEN IN  
1/100  
INCHES.

MATERIAL THICKNESS:

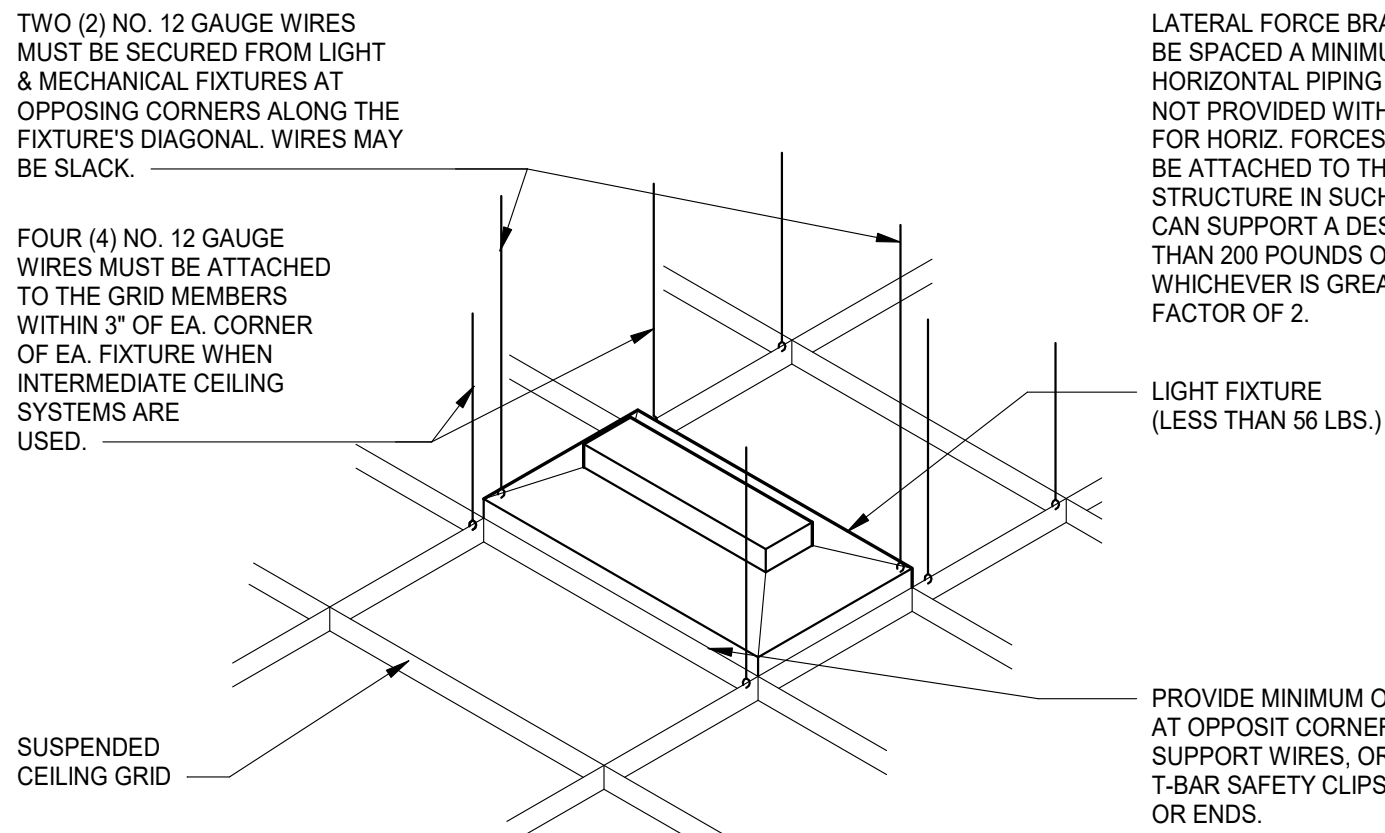
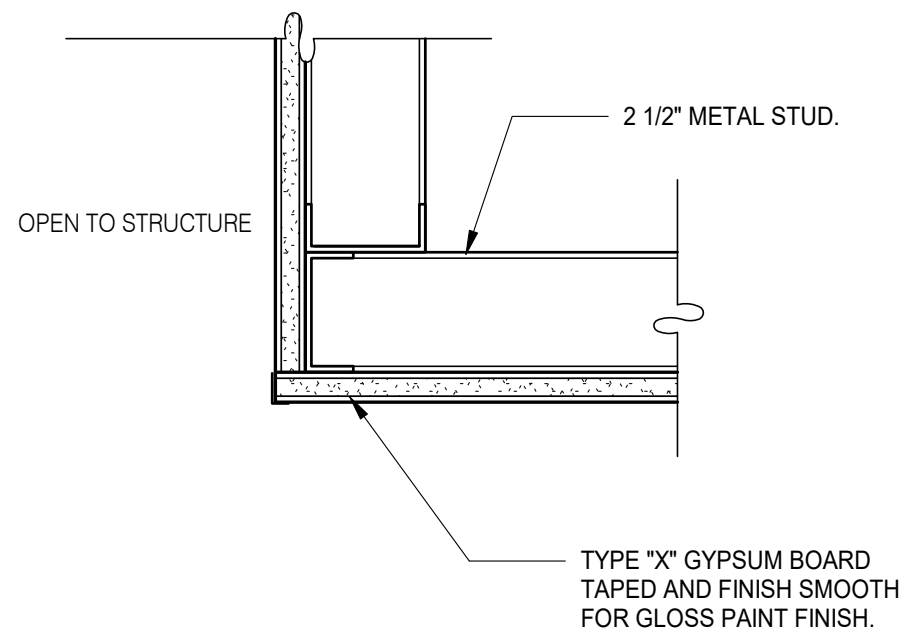
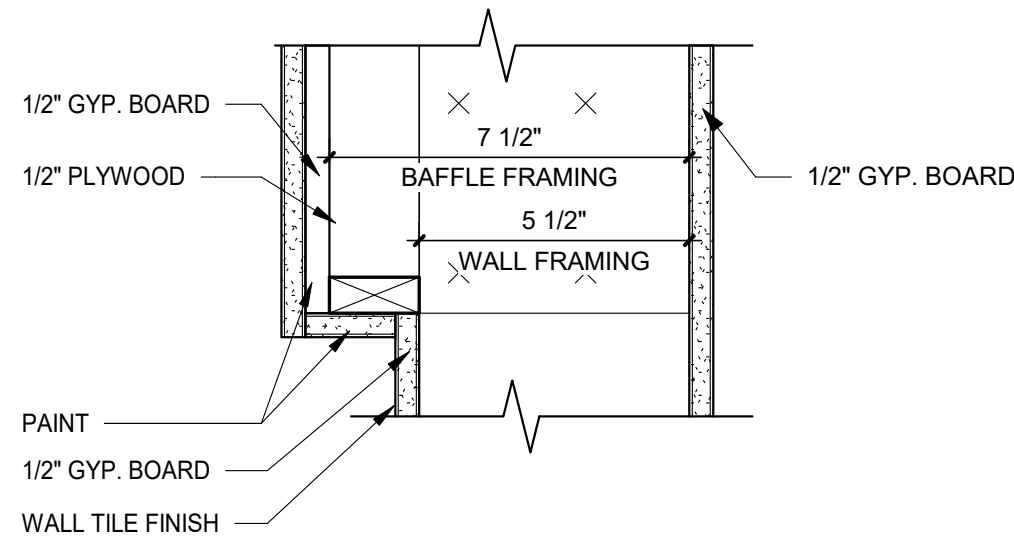
(EXAMPLE: 0.054 IN. = 54 MILS; 1 MIL = 1/1000 IN.)  
MATERIAL THICKNESS IS THE MINIMUM BASE METAL THICKNESS IN MILS. MINIMUM BASE METAL THICKNESS REPRESENTS 95% OF THE DESIGN THICKNESS.

CEILING SPAN TABLE NOTES:



SECTION:	(MIL)	4 PSF LATERAL SUPPORT OF COMPRESSION FLANGE UNSUPPORTED JOIST SPACING (IN.) O.C.								
		12" 16" 24"			12" 16" 24"			12" 16" 24"		
362S125	18	9'-3"	8'-7"	7'-7"	12'-8"	11'-7"	10'-0"			
362S125	27	10'-8"	9'-10"	8'-10"	15'-0"	13'-11"	12'-4"			
362S125	30	11'-0"	10'-2"	9'-1"	15'-6"	14'-4"	12'-10"			
362S125	33	11'-5"	10'-7"	9'-5"	16'-2"	14'-10"	13'-3"			
362S125	43	12'-8"	11'-8"	10'-5"	17'-9"	16'-5"	14'-8"			
362S137	27	12'-0"	11'-2"	10'-0"	17'-2"	15'-11"	14'-3"			
362S137	33	12'-11"	11'-11"	10'-8"	18'-4"	16'-11"	15'-2"			
362S137	43	14'-3"	13'-2"	11'-8"	20'-0"	18'-6"	16'-7"			
362S162	33	14'-8"	13'-7"	12'-2"	20'-10"	18'-11"	16'-6"			
362S162	43	16'-2"	14'-11"	13'-4"	22'-8"	20'-7"	18'-0"			
400S125	27	10'-11"	10'-1"	9'-1"	15'-5"	14'-3"	12'-9"			
400S125	30	11'-4"	10'-5"	9'-4"	16'-0"	14'-9"	13'-2"			
400S125	33	11'-9"	10'-10"	9'-8"	16'-7"	15'-3"	13'-8"			
400S125	43	13'-0"	12'-0"	10'-8"	18'-3"	16'-10"	15'-0"			
400S137	27	12'-4"	11'-5"	10'-3"	17'-7"	16'-4"	14'-8"			
400S137	33	13'-3"	12'-3"	10'-11"	18'-9"	17'-4"	15'-7"			
400S137	43	14'-7"	13'-6"	12'-0"	20'-7"	19'-0"	17'-0"			
400S162	33	15'-0"	13'-11"	12'-6"	21'-5"	19'-10"	17'-9"			
400S162	43	16'-7"	15'-3"	13'-8"	23'-4"	21'-7"	19'-4"			
600S125	27	12'-5"	11'-6"	10'-4"	17'-11"	16'-6"	14'-9"			
600S125	30	12'-9"	11'-10"	10'-8"	18'-5"	17'-1"	15'-3"			
600S125	33	13'-2"	12'-3"	11'-0"	18'-11"	17'-7"	15'-10"			
600S125	43	14'-6"	13'-4"	11'-11"	20'-6"	19'-0"	17'-0"			
600S137	33	14'-11"	13'-9"	12'-5"	21'-5"	19'-10"	17'-10"			
600S137	43	16'-3"	15'-0"	13'-5"	23'-1"	21'-5"	19'-3"			
600S162	33	16'-11"	15'-8"	14'-1"	24'-5"	22'-8"	20'-5"			
600S162	43	18'-5"	17'-0"	15'-3"	26'-4"	24'-4"	21'-11"			

NOTE: ALL JOIST INFORMATION IS BASED ON STEEL STUD MANUFACTURERS ASSOCIATION (SSMA) ICC ESR-3064P



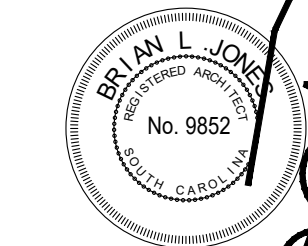
LATERAL FORCE BRACING MEMBERS MUST BE SPACED A MINIMUM OF 6" FROM ALL HORIZONTAL PIPING OR DUCT WORK THAT IS NOT PROVIDED WITH BRACING RESTRAINTS FOR HORIZ. FORCES. BRACING WIRES MUST BE ATTACHED TO THE GRID AND TO THE STRUCTURE IN SUCH A MANNER THAT THEY CAN SUPPORT A DESIGN LOAD OF NOT LESS THAN 200 POUNDS OR THE ACTUAL LOADS, WHICHEVER IS GREATER, WITH A SAFETY FACTOR OF 2.

LIGHT FIXTURE  
(LESS THAN 56 LBS.)

PROVIDE MINIMUM OF 2 SCREWS  
AT OPPOSIT CORNERS OF  
SUPPORT WIRES, OR SCREW ON  
T-BAR SAFETY CLIPS AT SIDES  
OR ENDS.

**ALLOWABLE CEILING SPANS-L/240** 12" = 1'-0"

PROJECT #22204

[illegible]

CONTRACT DATE: 03/31/2022

BUILDING TYPE: END. MED 40

PLAN VERSION: SEPT. 2021

GRAND DESIGNER:

SITE NUMBER: 315669

ENTITY NUMBER: 458169

A/PM:

DRAWN BY.:

OB NO.: 22204

## ENDEAVOR 2.0

SPEARS CREEK CHURCH RD  
(BY LIBERTY RIDGE DRIVE)  
SOUTH CAROLINA 29229



## CEILING DETAILS

## A6.5

PLOT DATE: 5/18/2022 2:22:24 PM