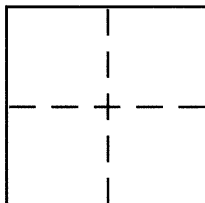


CORNER RECORDCity of OAKLANDCounty of ALAMEDA, CaliforniaBrief Legal Description LOT 2920, PIEDMONT PINES (14 H 40)**CORNER TYPE**

Government Corner ☐ Control ☐
 Meander ☐ Property ☒
 Rancho ☐ Other ☐
 Date of Survey NOV. 29, 2016

COORDINATES (Optional)

N. _____
 E. _____
 Zone _____ NAD27 ☐ NAD83 ☐
 NAD83 Epoch _____
 Elev. _____
 Vert. Datum: NGVD29 ☐ NAVD88 ☐
 Meas. Units: Metric ☐ Imperial ☐

Corner - Left as found ☐ Found and tagged ☐ Established ☒ Reestablished ☐ Rebuilt ☐

Identification and type of corner found: Evidence used to identify or procedure used to establish or reestablish the corner:

SEE OTHER SIDE

A description of the physical condition of the monument as found and as set or reset:

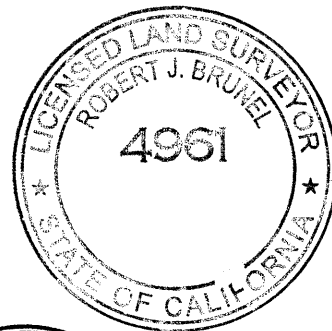
SEE OTHER SIDE

SURVEYOR'S STATEMENT

This Corner Record was prepared by me or under my direction in conformance with

the Land Surveyor's Act on JANUARY 10, 2017

Signed Robert J. Brunel P.L.S or R.C.E. No. 4961

**COUNTY SURVEYOR'S STATEMENT**

This Corner Record was received 13 JANUARY, 2017

and examined and filed 28 MARCH, 2017

Signed Michael Rubner P.L.S or R.C.E. No. 6843

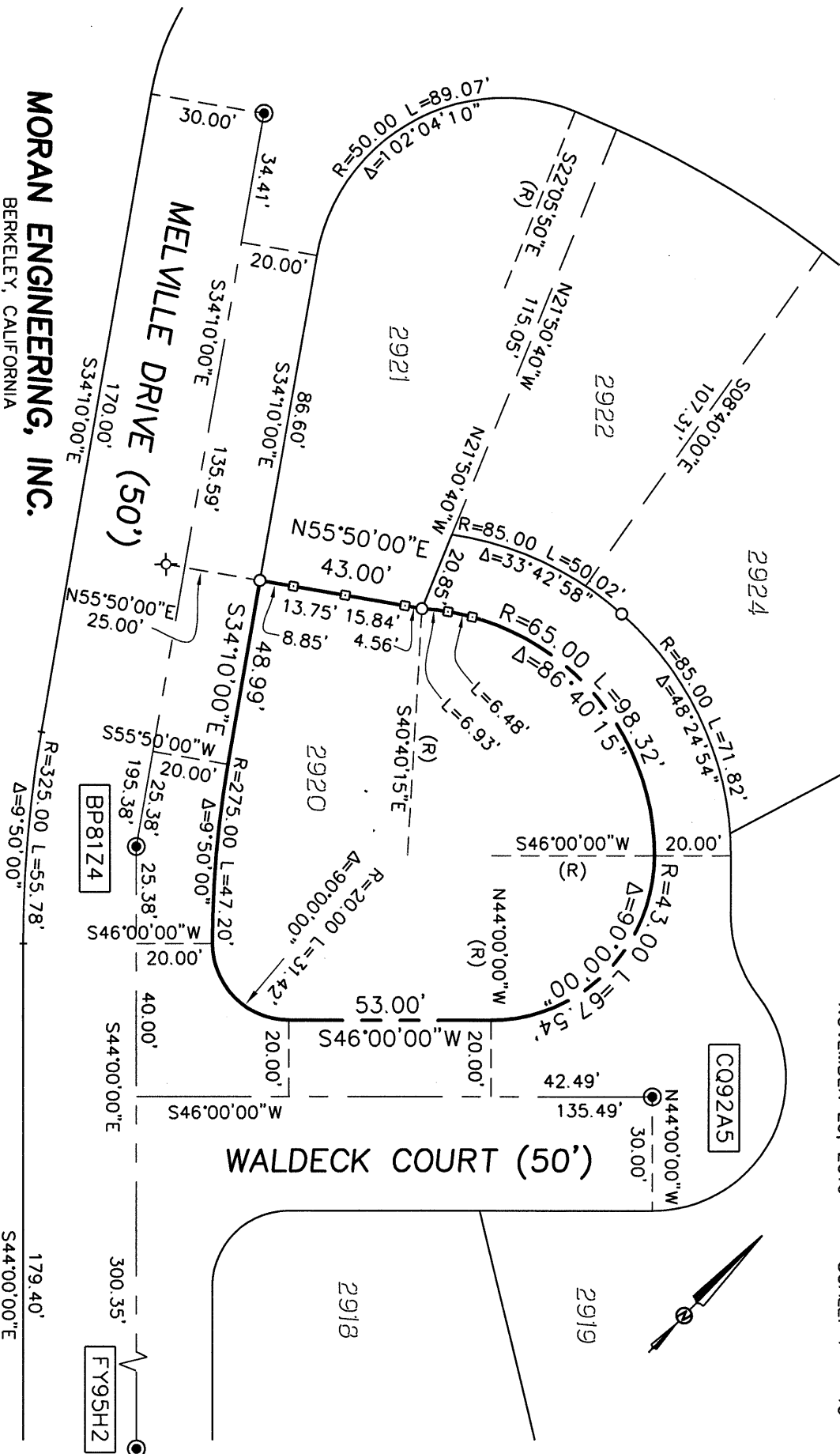
Title COUNTY SURVEYOR



County Surveyor's Comment _____

- LEGEND**
- FOUND CONCRETE MONUMENT PER (14 M 40)
 - SET 5/8" REBAR WITH PLASTIC CAP, LS 4961
 - SET 2" HUB WITH BRASS TAG, LS 4961
 - ✦ SET P.K. NAIL WITH BRASS TAG, LS 4961

CORNER RECORD
 LOT 2920
 PARCEL MAP 5665
 (189 M 85-86) OAKLAND, ALAMEDA COUNTY, CALIFORNIA
 NOVEMBER 29, 2016 SCALE: 1" = 40'



MORAN ENGINEERING, INC.
 BERKELEY, CALIFORNIA
 MELVILLE WALDECK CR.DWG
 JOB NO. 16-9538