

CORNER RECORD

Agency Index

BK141 PG 94

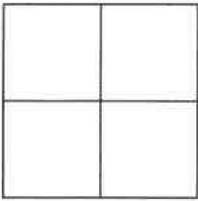
Document Number

CR 14930

City of EDEN TOWNSHIP

County of ALAMEDA, California

Brief Legal Description WELL MONUMENT LOCATED WITHIN E. 24th ST AT 17th AVE AND WALLACE ST.



CORNER TYPE

COORDINATES (Optional)

Government Corner ☐ Control ☒
Meander ☐ Property ☐
Rancho ☐ Other ☐

N. _____ E. _____

Elevation _____

Units Metric ☐ U.S. Survey Foot ☐

Horizontal Datum _____

Zone _____ Epoch Date _____

Vertical Datum _____

☐ Complies with Public Resources Code §§8801-8819☐ Complies with Public Resources Code §§8890-8902

Date of Survey 10/15/2020

PLS Act Ref: ☐ 8765 (d) ☒ 8771 ☐ 8773 ☐ Other: _____

Corner/
Monument: ☒ Left as found ☐ Established ☐ Rebuilt ☒ Pre-Construction
☐ Found and tagged ☐ Reestablished ☒ Referenced ☐ Post-Construction

Narrative of corner identified and monument as found, set, reset, replaced, or removed:

☐ See sheet #2 for description (s):

FOUND 1/4" PIN IN CONCRETE IN MONUMENT WELL.

EXIST RP IN JEOPARDY DUE TO ACTIVE CONSTRUCTION PROJECT IN VICINITY. REF CR 4479

FOUND AND SET POINTS AS SHOWN ON PAGE 2.

THIS POINT WAS REFERENCED PRIOR TO A CONSTRUCTION PROJECT IN THE VICINITY.

THE TIES SHOWN HEREON ARE FOR THE PURPOSE OF PERPETUATING FOUND MONUMENTATION.

NO CLAIM IS MADE AS TO THE RELATIONSHIP OF THE POINTS OR LINES SHOWN HEREON TO TRUE

BOUNDARY LOCATION.

SURVEYOR'S STATEMENT

This Corner Record was prepared by me or under my direction in conformance with

the Professional Land Surveyors' Act on OCTOBER 1, 2021

Signed John T. May P.L.S. or ~~P.C.E.~~ No. 8570

COUNTY SURVEYOR'S STATEMENT

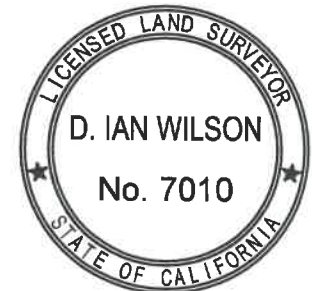
This Corner Record was received _____

and examined and filed OCT 26 2021

Signed D. Ian Wilson P.L.S. or ~~P.C.E.~~ No. 7010

Title COUNTY SURVEYOR

County Surveyor's Comment



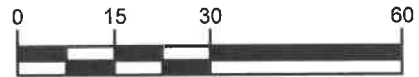
SCALE: 1"=30'

LEGEND

- FOUND 1/4" PIN IN CONCRETE IN MONUMENT WELL
- ⊗ SET CUT CROSS IN WALK
- ✕ FOUND NAIL AND TAG STAMPED "EBMUD CR" PER CR 4479
- SET REBAR & CAP STAMPED "TOWILL RP"
- APN ASSESSOR'S PARCEL NUMBER

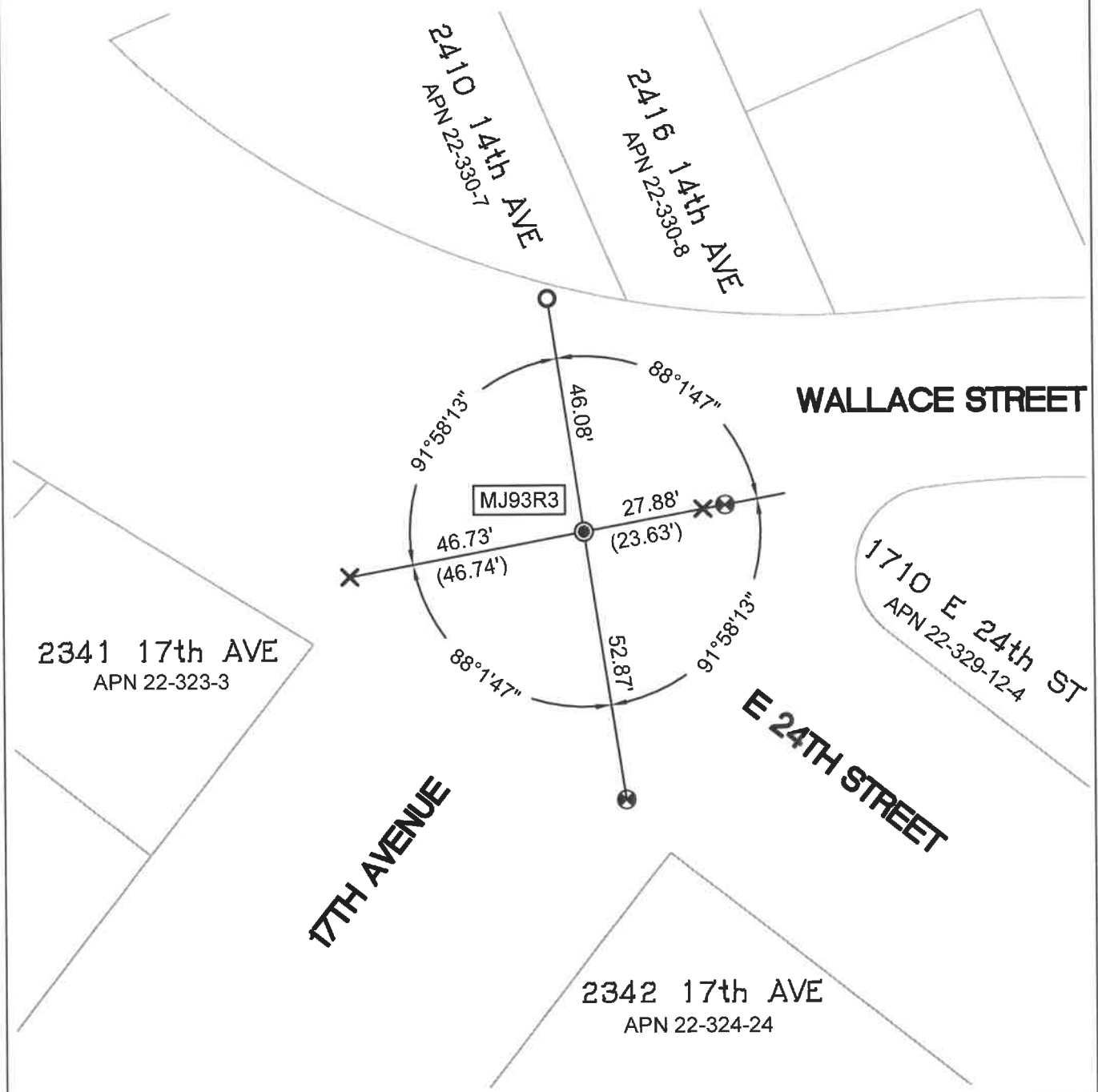
AA###A# ALAMEDA COUNTY MONUMENT ID

19592 REFERENCE STREET ADDRESS



GRAPHIC SCALE: 1 INCH = 30 FT

ALL MEASUREMENTS ARE IN U.S. SURVEY FOOT AND DECIMAL THEREOF



16647-E 24th St-CR-1