

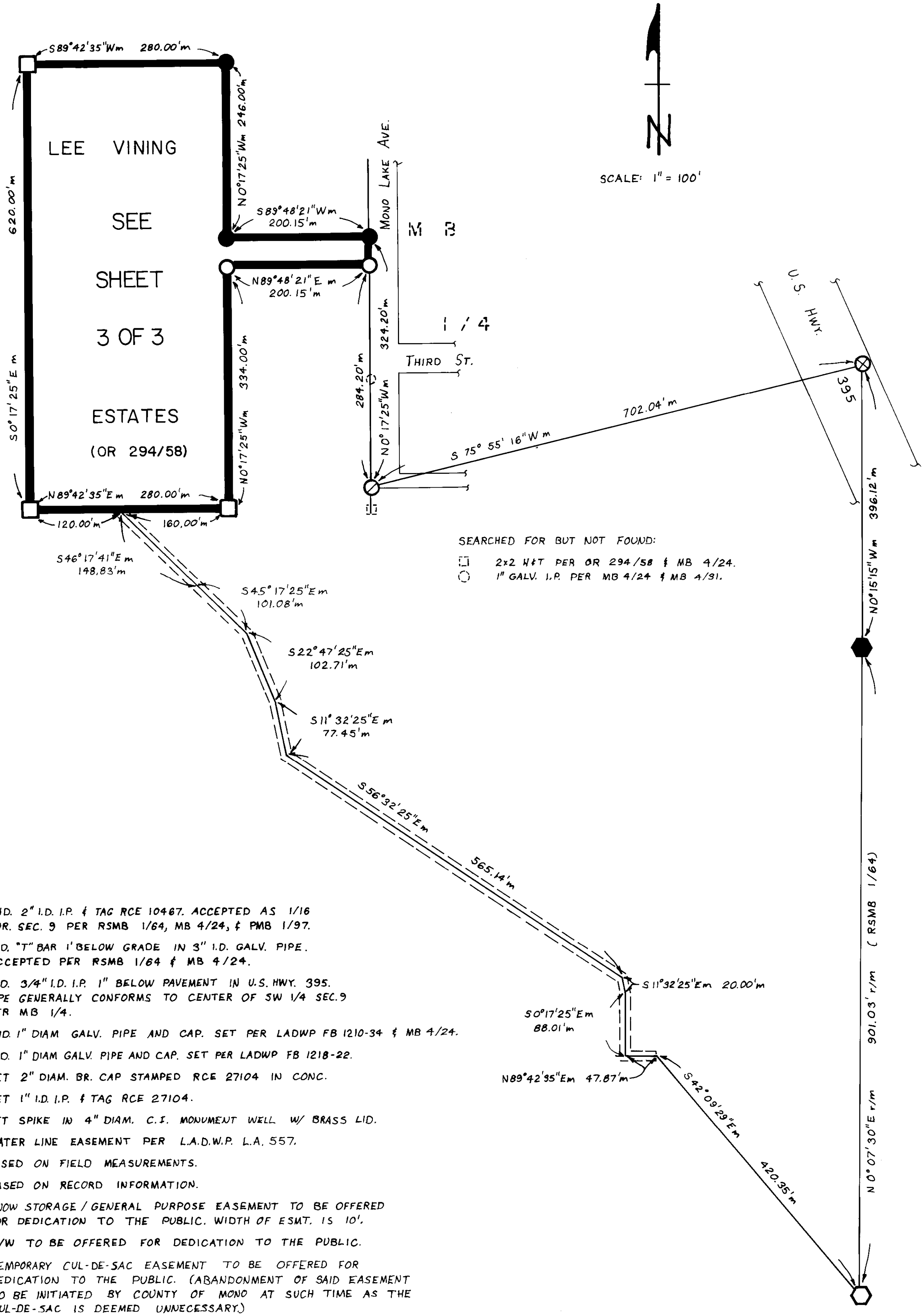
FINAL MAP NO. 34-08

LEE VINING ESTATES

SHEET 2 OF 3

A DIVISION OF A PORTION OF THE SW 1/4 OF SEC 9, T1N,
R26 E, MDB&M, MONO COUNTY, CALIFORNIA.

AREA IN SUBDIVISION: 4.17 A.
AREA IN STREETS: 0.98 A.



1/11/16 Page 50-A