

BASIS OF BEARINGS

Bearings on this map are based upon those in "Record of Survey of Rabb Park" filed in the office of the County Recorder of Amador County in Book 8 of Maps and Plats at page 17.

MONUMENTS SET

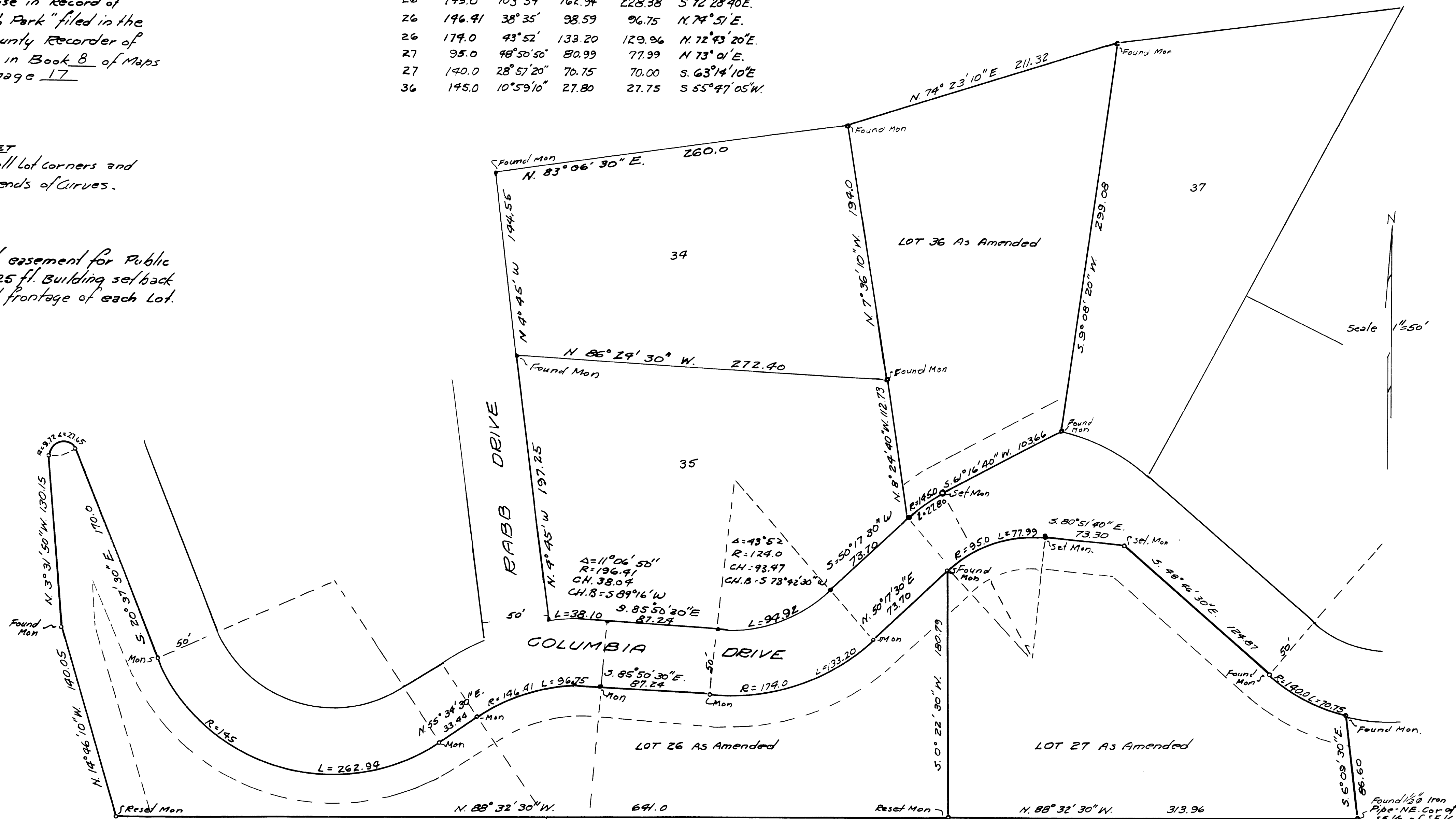
1/2" Iron rods at all lot corners and beginnings and ends of curves.

Note

There is a 10 ft. easement for public utilities and a 25 ft. Building setback along the street frontage of each lot.

CURVE DATA

LOT NO.	R.	Δ	ARC.	CHORD	BEARING
26	9.72	163°0'20"	27.65	18.98	N 78°36'E.
26	145.0	103°59'	162.94	228.38	S 72°28'40"E.
26	196.41	38°35'	98.59	96.75	N 74°51'E.
26	174.0	43°52'	133.20	129.96	N 72°43'20"E.
27	95.0	48°50'50"	80.99	77.99	N 73°01'E.
27	140.0	28°57'20"	70.75	70.00	S 63°14'10"E.
36	145.0	10°59'10"	27.80	27.75	S 55°47'05"W.



SURVEYOR'S CERTIFICATE

This map correctly represents a survey made by me or under my direction in conformance with the requirements of Chapter 15 of Division 3 of the Business and Professions Code in September 1962 to correct a previous survey which was in error.

Marshall Dunlap  
MARSHALL DUNLAP R.C.E. 7029

COUNTY SURVEYOR'S CERTIFICATE

This map has been examined for conformance with the requirements of Chapter 15 of Division 3 of the Business and Professions Code this 28<sup>th</sup> day of November, 1962

Ledger L. McMin  
AMADOR COUNTY SURVEYOR

COUNTY RECORDER'S CERTIFICATE

Filed for Record this 28<sup>th</sup> day of November, 1962, at 12:15 PM in Book 9 of Maps and Plats at page 4 at the request of

Anthony Sutton  
AMADOR COUNTY RECORDER  
By Norma L. Skille Deputy

AMENDED RECORD OF SURVEY OF LOTS 26, 27 AND 36 OF RABB PARK IN SECTION 15 T.7N. R.13E. M.D.B. & M. IN AMADOR COUNTY, CALIFORNIA  
MARSHALL DUNLAP CIVIL ENGINEER  
OCTOBER 1962