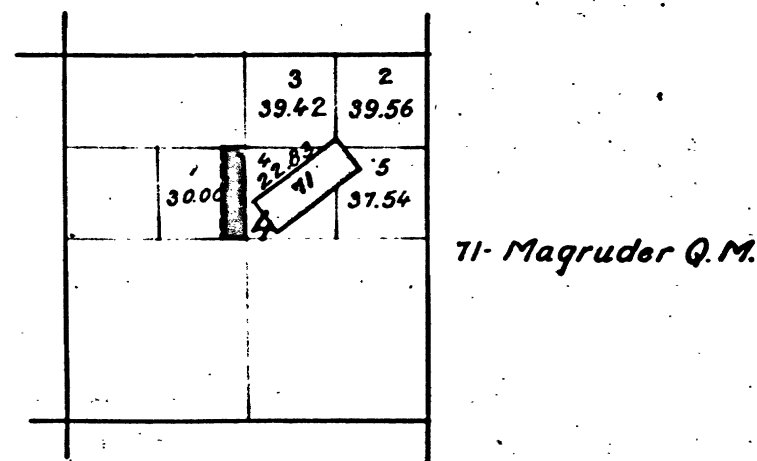


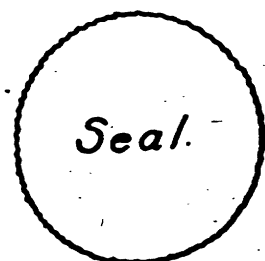
Township N°2 North, Range N°14 East, Mount Diablo Meridian, California.

Sec. 24 T. N°2 N, R. N°14 E, M. D. M.

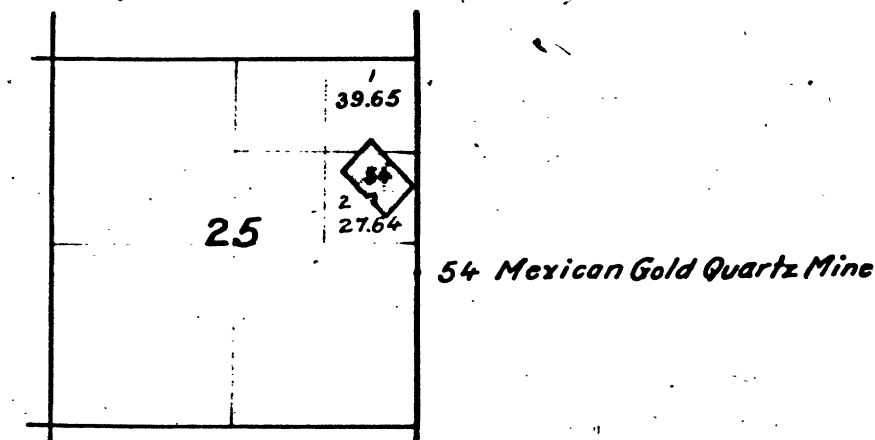


The above diagram of Sec. 24, T. N°2 N, R. N°14 E, M. D. M. is correctly copied from the original amended plat on file in this Office U.S. Surveyor General's Office San Francisco - California October 23, 1897

W. J. Green.
U.S. Surv. Gen'l. Cal.



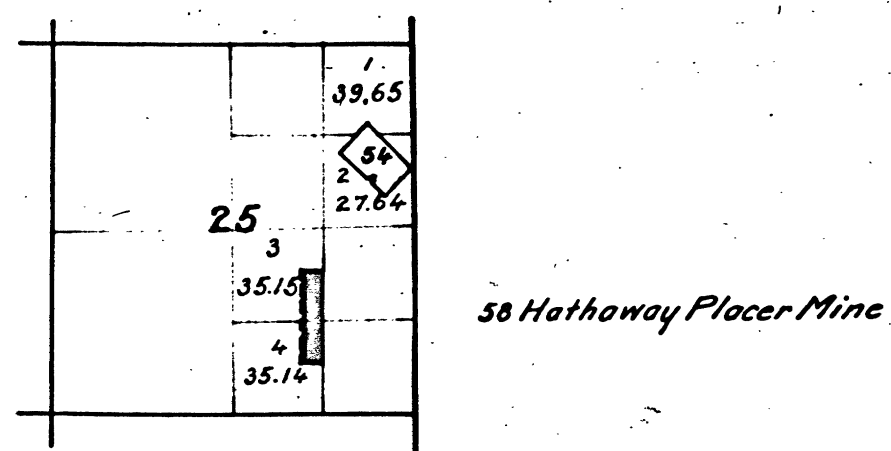
T. N°2 N, R. N°14 E, M. D. M.



The above diagram showing amendments to Section 25 Township N°2 North Range N°14 East Mount Diablo Meridian, is correctly copied from the original map as amended and on file in this Office. U.S. Surveyor General's Office San Francisco, California August 16th 1897.

R. P. Hammond, Jr.
U.S. Surv. Gen'l. Cal.

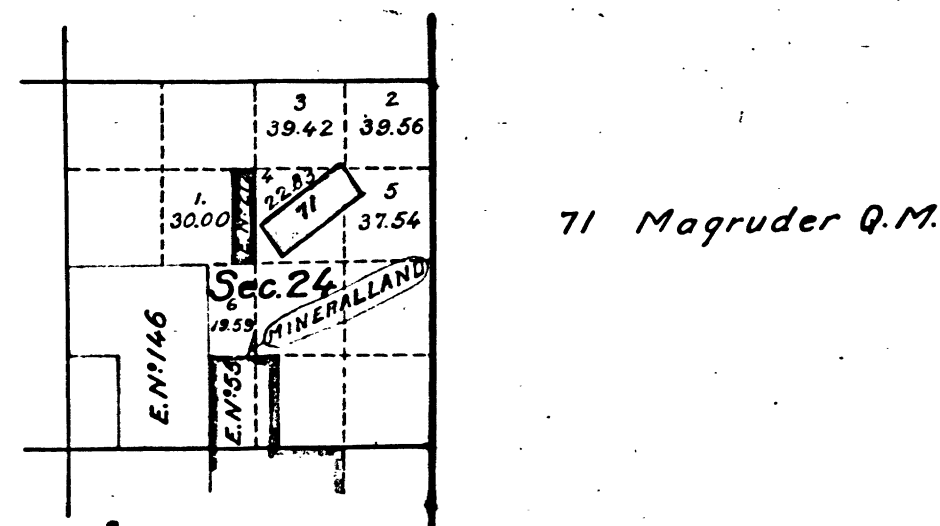
T. 2 N, R. 14 E, M. D. M.



The above diagram of Sec. 25 Township N°2 North, Range N°14 East Mount Diablo Meridian is correctly copied from the original map as amended, and on file in this Office. U.S. Surveyor General's Office San Francisco, California August 8th 1889.

R. P. Hammond, Jr.
U. S. Surv. Gen'l. Cal.

T. 2 N, R. 14 E, M. D. M.



The above diagram of Sec. 24 Township N°2 North, Range N°14 East Mount Diablo Meridian is correctly constructed in accordance with directions contained in Department letter N, dated November 21, 1906. U.S. Surveyor General's Office San Francisco, California November 30, 1906.

W. S. Graham
U. S. Surveyor-General for California

DEPARTMENT OF THE INTERIOR,
GENERAL LAND OFFICE,
Washington, D. C. *Oct. 8, 1905.*
I hereby certify that this is a true copy
of the plats of official survey of the lands
to which it relates, on file in this office.

H. W. [Signature]
Recorder, General Land Office.