

TRACT NO. 3566

CITY ENGINEER'S CERTIFICATE
I hereby certify that I have examined the within final map of Tract No. 3566, that the subdivision shown thereon is substantially the same as it appeared on the tentative map and any approved alterations thereof, that all provisions of Subdivision Map Act and any local ordinance applicable at the time of approval of the tentative map have been complied with and that I am satisfied that said map is technically correct.

Dated August 19, 1963

George S. Nolte
CITY ENGINEER, THE CITY OF SAN JOSE

CITY CLERK'S CERTIFICATE
I hereby certify that the within final map of Tract No. 3566 was approved by the City Council of the City of San Jose at a regular meeting of said Council held on the 12 day of August, 1963, and that said Council did, at said meeting, accept the dedication of all streets and portions of streets and easements as shown on said map within said subdivision.

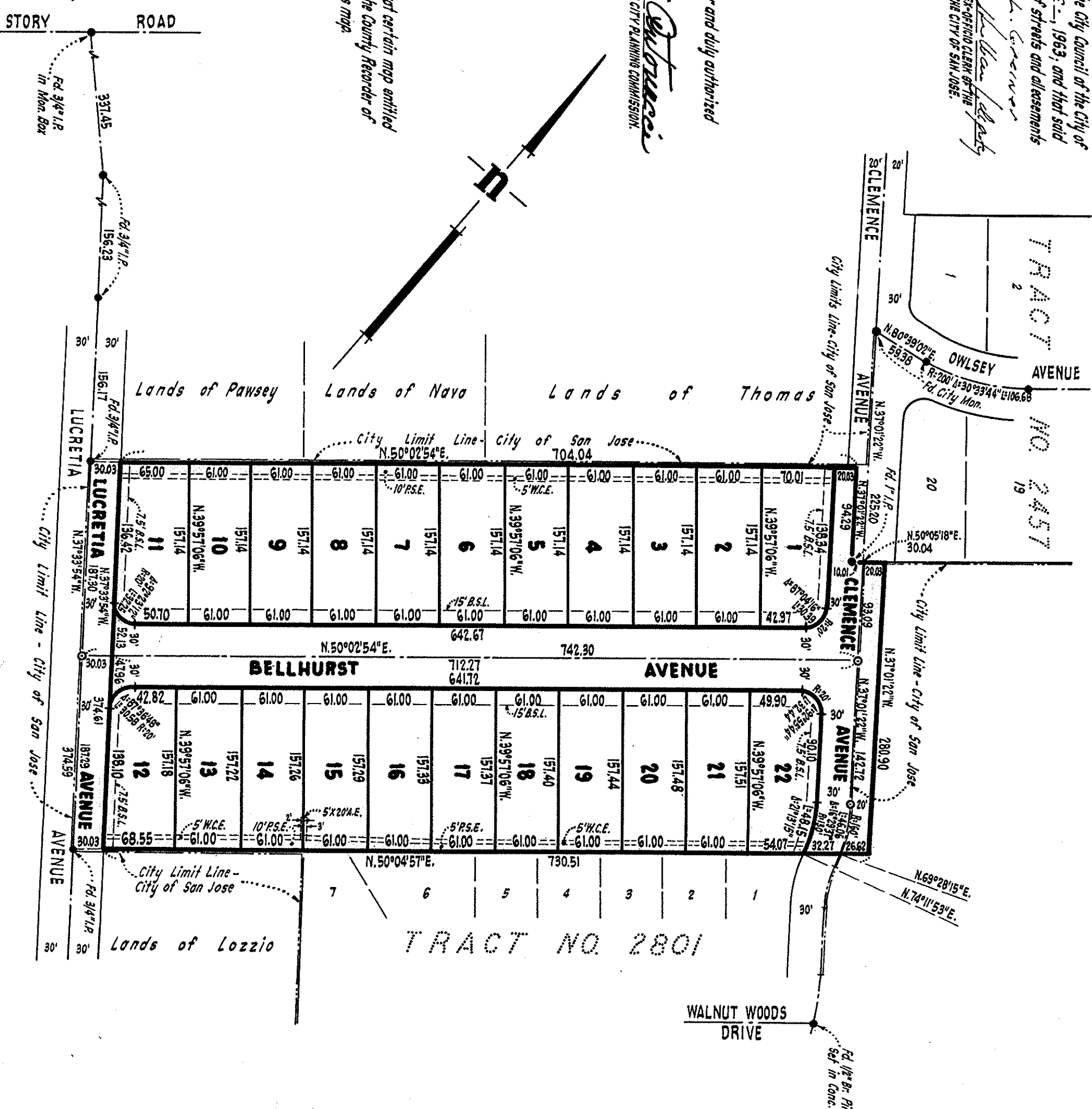
Francis L. Gorman
CITY CLERK AND EX-OFFICIO CLERK OF THE CITY COUNCIL OF THE CITY OF SAN JOSE

PLANNING COMMISSION'S CERTIFICATE
Approved by the City Planning Commission of the City of San Jose at a regular and duly authorized meeting of said Commission held on the 12 day of August, 1963.

Robert C. Gutierrez
SECRETARY, SAN JOSE CITY PLANNING COMMISSION

BASIS OF BEARINGS
The bearing N 37° 01' 22" W. of the centerline of Clemente Avenue as shown on that certain map entitled "Tract No. 2457" as recorded in Book 115 of Maps of page 29 in the office of the County Recorder of Santa Clara County, California, was taken as the basis of bearings shown on this map.

NOTES AND LEGEND
All distances and dimensions are shown in feet and decimals thereof.
The blue border line indicates the boundary of land subdivided by this map.
● Indicates monument found as noted.
○ Indicates "I" Iron Pipe monument set.
⊙ Indicates Standard City Monument set.



CONSISTING OF ONE SHEET
BEING A PORTION OF BLOCK 1 CLEMENTE SUBDIVISION
LYING WITHIN THE CITY OF
SAN JOSE, CALIFORNIA.
JUNE, 1963.
SCALE: 1"=100'
GEORGE S. NOLTE CONSULTING CIVIL ENGINEERS, INC.
PALO ALTO-SUNNYVALE-WALNUT CREEK-SAN RAFAEL-REDWOOD CITY

OWNER'S CERTIFICATE
We hereby certify that we are the owners of, or have some right, title or interest in, and to the real property included within the subdivision shown upon the within map, that we are the only persons whose consent is necessary to pass a clear title to said real property, that we hereby consent to the making of said map and subdivision as shown within the blue border line and that we hereby offer the dedication to public use of all streets and portions of streets and easements as shown on the within map within said subdivision and we also dedicate easements for any and all public uses under, on or over those certain strips of land lying between the lines of streets and the desired lines each designated as "Public Use Easement" as shown on the within map within said subdivision, such strips to be kept open and free from buildings and structures of any kind except lawful fences and irrigation systems and appurtenances thereto. We also hereby dedicate to public use easements for all public service facilities including poles, wires, conduits, storm sewers, sanitary sewers, and gas, water and heat mains and all public utilities and any and all appurtenances to the above, under or over those certain strips of land lying between the rear lines and/or side lines of lots and the desired lines each designated as "Public Service Easement" and easements under, on or over those certain strips of land delineated and designated as "Public Use Easement" and easements to the wire clearance purposes only over those certain areas delineated and designated as "Wire Clearance Easement". Public Service Easements to be kept clear of buildings and structures of any kind, except utility company structures and lawful fences. Wire Clearance Easements to be limited to buildings and structures or appurtenances thereto which have a maximum height of fifteen feet above the grade of the ground line of public.

CITY TITLE INSURANCE COMPANY, a corporation, Owner

Paula T. Lina
VICE PRESIDENT

CORPORATE AGENCY, a corporation, Trustee

John J. Lina
VICE PRESIDENT

John J. Lina
ASSOCIATE SECRETARY
John J. Lina
SECRETARY

STATE OF CALIFORNIA
County of Santa Clara
On this 19 day of July, 1963, before me, *Paula T. Lina*, a Notary Public in and for said State and County, residing therein, duly commissioned and sworn, personally appeared *George S. Nolte* and *John J. Lina*, known to me to be the Vice Presidents and Secretary, respectively, of CITY TITLE INSURANCE COMPANY, the corporation that executed the within instrument and also known to me to be the persons who executed it on behalf of said corporation and they acknowledged to me that such corporation executed the within instrument pursuant to its by-laws or a resolution of its board of directors, as Owner.

Paula T. Lina
NOTARY PUBLIC

STATE OF CALIFORNIA
County of Santa Clara
On this 19 day of July, 1963, before me, *Paula T. Lina*, a Notary Public in and for said State and County, residing therein, duly commissioned and sworn, personally appeared *George S. Nolte* and *John J. Lina*, known to me to be the Vice Presidents and Secretary, respectively, of CORPORATION AGENCY, the corporation that executed the within instrument and also known to me to be the persons who executed it on behalf of said corporation and they acknowledged to me that such corporation executed the same, as Trustee.

Paula T. Lina
NOTARY PUBLIC

2603012

COUNTY RECORDER'S CERTIFICATE
File No. 2603012 The Field accepted for record and recorded in Book 116 of Maps of page 16 in the office of the County Recorder of Santa Clara County, California, this 20 day of April, 1964, at 5:17 minutes past 2 o'clock P. M.

Paul R. Telih
DEPUTY

CIVIL ENGINEER'S CERTIFICATE
I, George S. Nolte, hereby certify that I am a Registered Civil Engineer of the State of California, that this map, consisting of one (1) sheet, correctly represents a survey made under my supervision during May, 1963, that the survey is true and complete as shown, that all monuments shown herein actually exist or will be placed before June, 1965, that said monuments are sufficient to enable the survey to be retraced and that their positions are correctly shown.

Dated 29 July, 1963.

George S. Nolte
REGISTERED CIVIL ENGINEER - CERTIFICATE NO. 15395