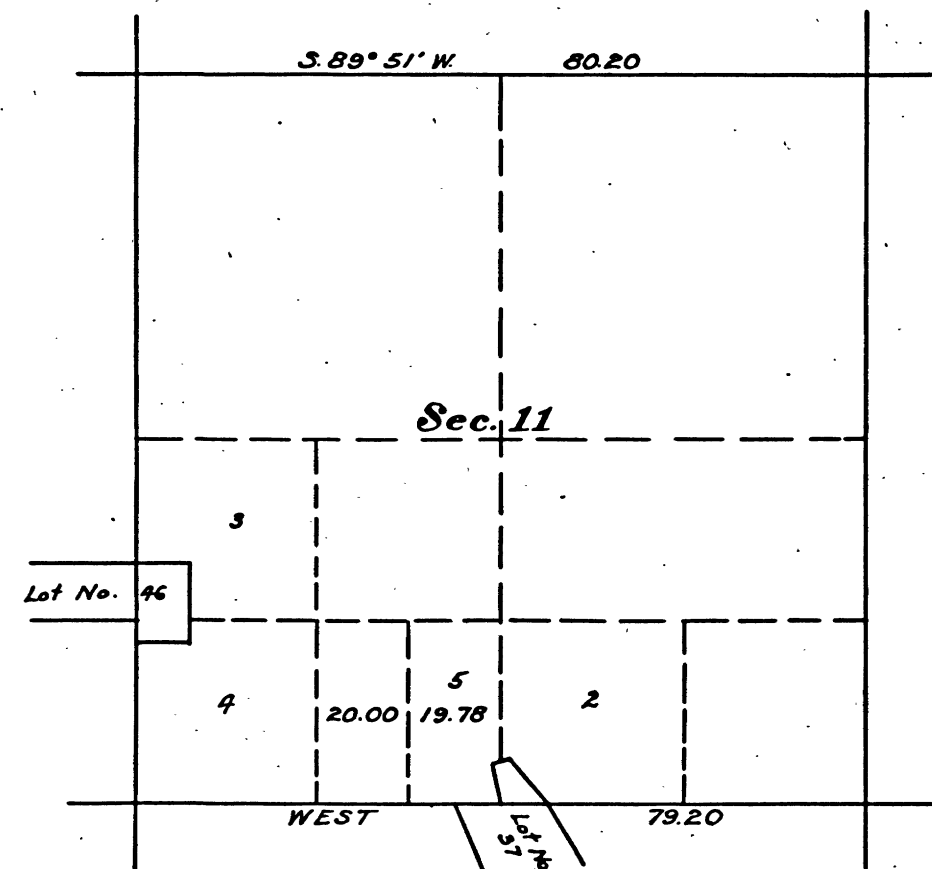


Supplemental Plat of Section 11,
Township N^o 4 North, Range N^o 13 East, Mount Diablo Meridian, California



Lot No. 37 Cave City Placer Mine.
Lot No. 46 Old McKinney Quartz Mine.

Authorization; letter Sacramento 013220 "N" BH dated December 16, 1922.

This supplemental plat, showing the subdivision of lot 1, section 11, T. 4 N., R. 13 E., M. D. M., California, plats approved May 5, 1881 and January 4, 1885, is made for the purpose of obtaining the area and legal description of the subdivisions thereof, to accommodate Sacramento mineral entry 013220, and is hereby approved.

U.S. Surveyor General's Office,
San Francisco, California,
January 10, 1923.

John C. Plover
U.S. Surveyor General for California.

Scale 20 chains to an inch.

Mean Magnetic Declination

Surveys Designated	By Whom Surveyed	Group		Amount of Surveys			When Surveyed	
		No.	Date	Mls.	chs.	lks.	Began	Completed

The above map of Township No. _____ Range No. _____ of the
Meridian _____ is strictly conformable to the field notes of the survey thereof on file
in this office, which have been examined and approved.

U. S. Surveyor General's Office.

Surveyor General.

41 332

REGISTER AND RECEIVER RECEIPT

DATED MAR 22 1923

T. 4 N. R. 13 E. MD.

BLM 172