

PARCEL MAP NO. 3377
EDEN TOWNSHIP
ALAMEDA COUNTY, CALIFORNIA

BISSELL & KARN, INC.
CIVIL ENGINEERS
SAN LEANDRO, CALIFORNIA
MAY, 1984

SCALE: 1" = 30'

BASIS OF BEARINGS

The line between monuments shown hereon as N 88°28'32"E 399.56' taken as N 88°28'32"E. per R/S No. 656.

LEGEND

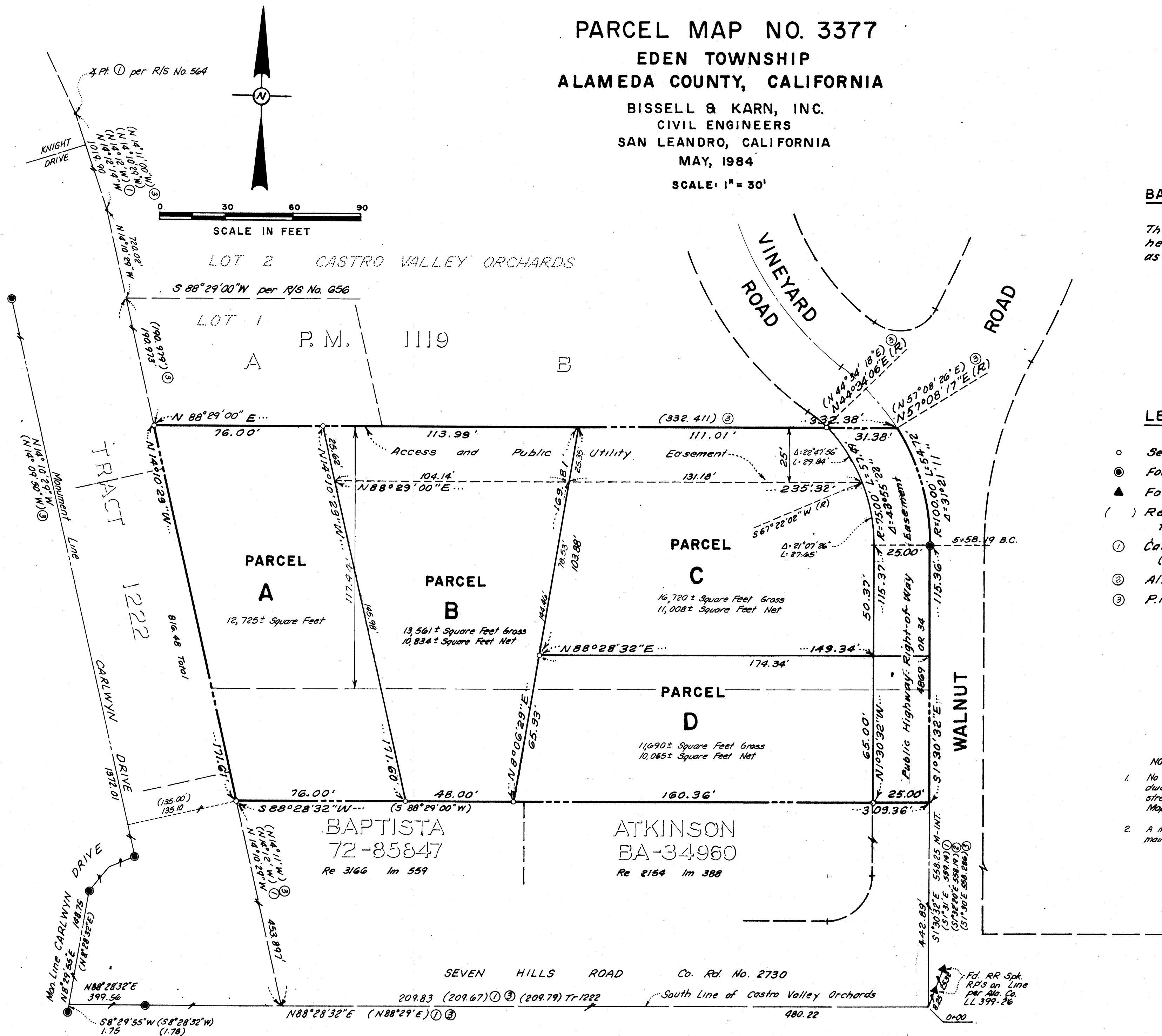
- Set 3/4" Iron Pipe R.C.E. 9821
- Found Alameda County Std. concrete monument
- ▲ Found railroad spike
- () Record dimension not in agreement with field measurement
- ① Castro Valley Orchards (C.V.O.) 25 M 72
- ② Alameda County Dwg. B-2064
- ③ P.M. 1119

NOTE:

1. No final inspection or occupancy will be granted any dwelling on Parcels A and B until such time as the street improvements required by the Approved Tentative Map have been completed.
2. A minimum of three (3) off-street parking spaces are to be maintained on Parcels A and B upon construction of residences.

*** USE WITH CAUTION ***
THIS IS A PUBLIC WORKS DEPARTMENT
WORKING COPY OF AN OFFICIAL MAP
ON FILE IN THE OFFICE OF THE COUNTY
RECORDER, COUNTY OF ALAMEDA. OF-
FICE INFORMATION OR CALCULATIONS
MAY HAVE BEEN ADDED HEREON.

85-103564
SHEET 2 OF 2 SHEETS



filed 5-30-85

154/53

PM 3377 35/451 Map Bk 154 pg 53