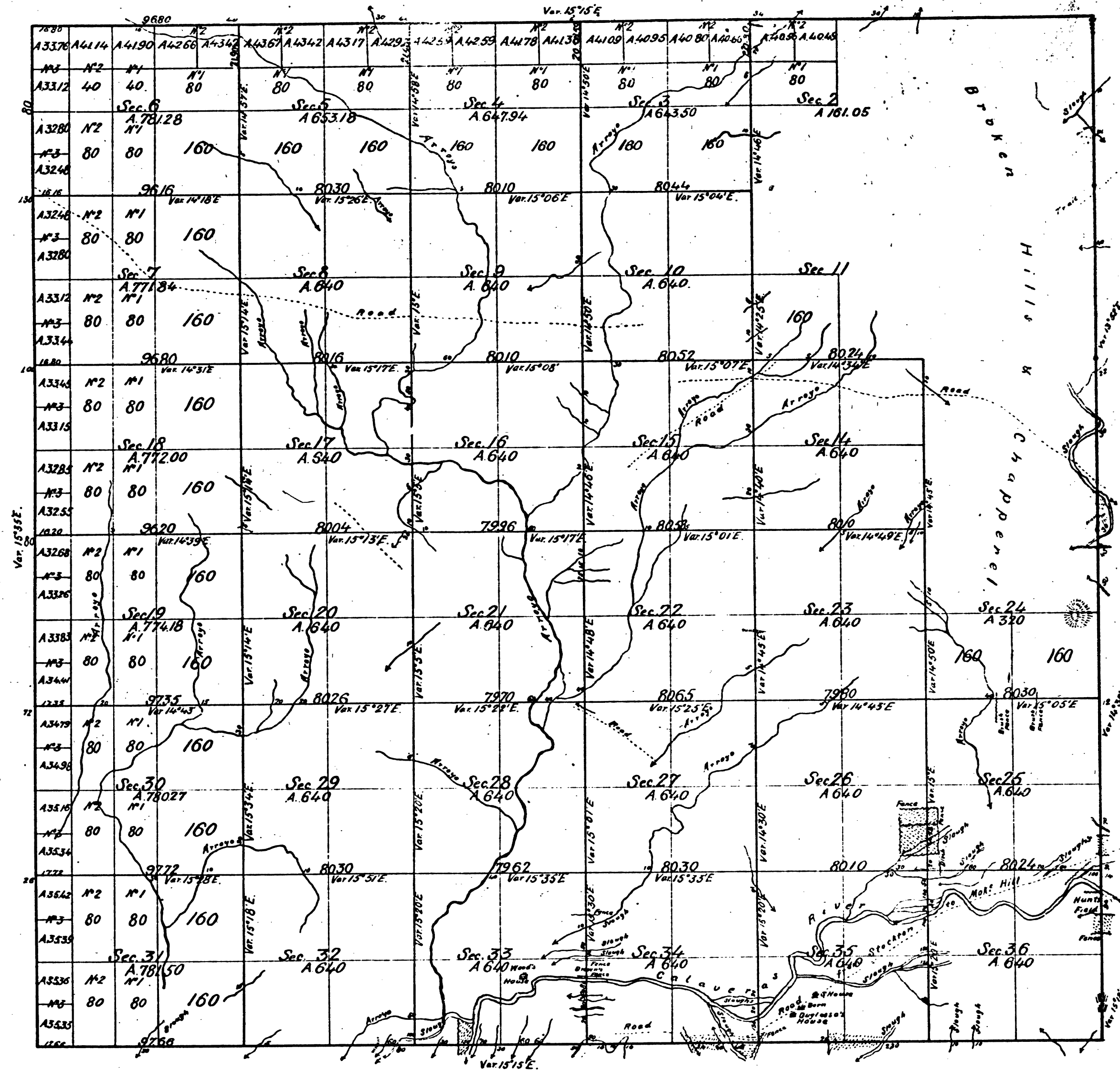


Township N° 3 North, Range N° 9 East, of Mount Diablo Meridian.



DEPARTMENT OF THE INTERIOR,
GENERAL LAND OFFICE,
Washington, D. C. *July 16, 1897.*
I hereby certify that this is a true copy
of the plat of official survey of the lands
to which it relates, on file in this office.

H. W. Bradford,
Recorder, General Land Office.

Aggregate Area of Public lands (Surveyed) 20,686.74 Acres.
Estimated " " Mountain " (Unsurveyed) 3,201.35 "
Aggregate 23,888.09

Surveys Designated	By Whom Surveyed	Date of Contract	Amount of Surveys	When Surveyed
West Boundary of Township	R. W. Morris	Oct. 12 th 1852	6 09 00	1852
North	Jasper S. Whiting	February 13 th 1855	6 18 80	1855
East	"	"	6 00 00	"
South	"	"	6 17 66	"
Section lines	"	"	55 12 23	"

The above Map of Township N° 3 North, Range N° 9 East (Mount Diablo Meridian) is strictly conformable
to the field notes of the surveys thereof on file in this Office, which have been examined and approved,
Surveyor General's Office,
San Francisco, California,
October 19th 1855.

John C. Wray
Surv. Gen. Col.

