

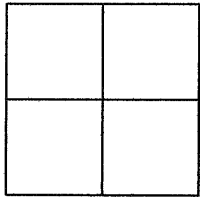
# CORNER RECORD

BK29 Pg 69  
Document Number CR 3288

City of OAKLAND

County of ALAMEDA, California

Brief Legal Description WELL MONUMENT LOCATED WITHIN MALCOLM AVENUE.



## CORNER RECORD

Government Corner ☐ Control ☒  
Meander ☐ Property ☐  
Rancho ☐ Other ☐  
Date of Survey 12/03/2007

## COORDINATES (Optional)

N. \_\_\_\_\_  
E. \_\_\_\_\_  
Zone \_\_\_\_\_ Datum \_\_\_\_\_  
Elev. \_\_\_\_\_

Corner — Left as found ☒ Found and tagged ☐ Established ☐ Reestablished ☐ Rebuilt ☐

Identification and type of corner found: Evidence used to identify or procedure used to establish or reestablish the corner:  
FOUND BRASS PIN IN WELL MONUMENT WITHIN MALCOLM AVENUE.

AS SHOWN ON OAKLAND MONUMENT MAP, PAGE 70.

THIS POINT WAS REFERENCED PRIOR TO A CONSTRUCTION  
PROJECT IN THE VICINITY

A description of the physical condition of the monument as found and as set or reset:  
FOUND AND SET POINTS AS SHOWN ON PAGE 2.

## SURVEYOR'S STATEMENT

This Corner Record was prepared by me or under my direction in conformance with  
the Land Surveyors' Act on JANUARY 28, 2008.

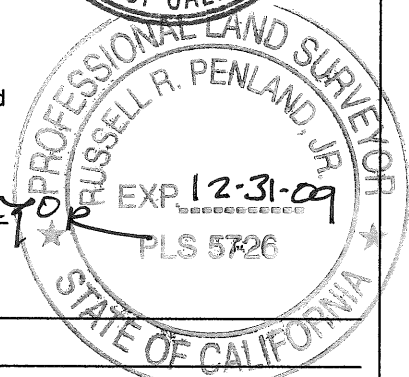
Signed VINCENT H. CUNHA L.S. Number L5 4520  
EXP. 9-30-08



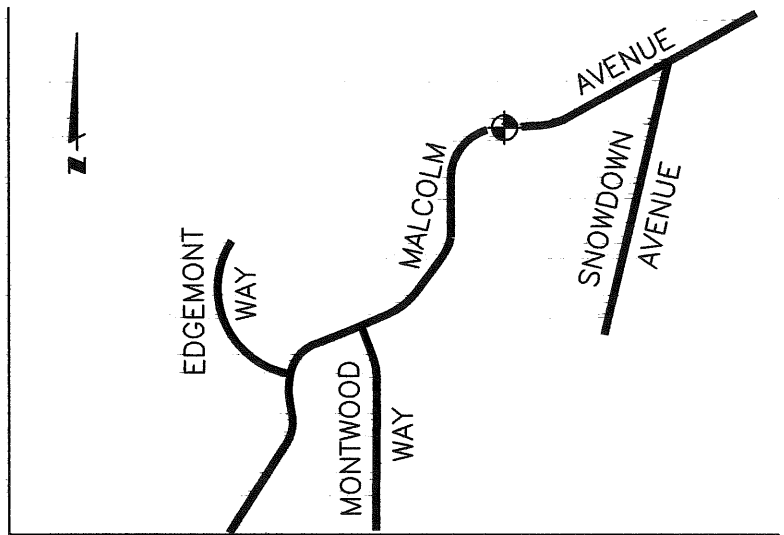
## COUNTY SURVEYOR'S STATEMENT

This Corner Record was received 3-12-2008 and examined  
and filed 5-11-2008.

Signed Russell R. Penland, Jr. Title COUNTY SURVEYOR

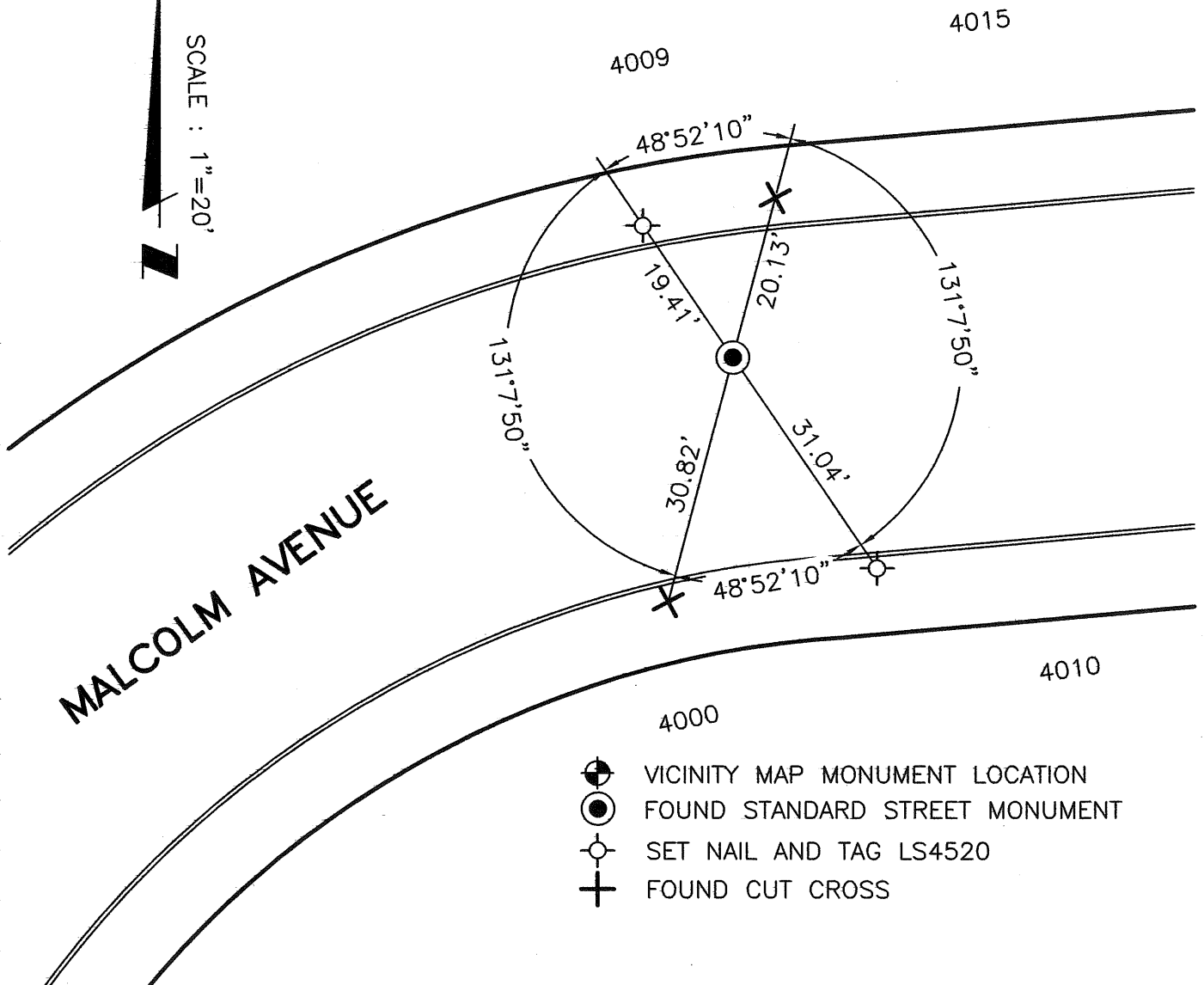


County Surveyor's Comment \_\_\_\_\_



VICINITY MAP (NTS)

SCALE : 1"=20'



- VICINITY MAP MONUMENT LOCATION
- ⊙ FOUND STANDARD STREET MONUMENT
- ⊕ SET NAIL AND TAG LS4520
- ⊕ FOUND CUT CROSS