



PANDA EXPRESS INC.
1683 Walnut Grove Ave.
Rosemead, California
91770
Telephone: 626.799.9898
Facsimile: 626.372.8288

All ideas, designs, arrangement and plans indicated or represented by this drawing are the property of Panda Express Inc. and were created for use on this specific project. None of these ideas, designs, arrangements or plans may be used by or disclosed to any person, firm, or corporation without the written permission of Panda Express Inc.

REVISIONS:

ISSUE DATE:

04/27/21 WALMART REVIEW
05/05/21 ISSUE FOR PERMIT

PANDA PROJECT #: S8-22-D8044
PANDA STORE #: D8044
ARCH PROJECT #: Q511070001

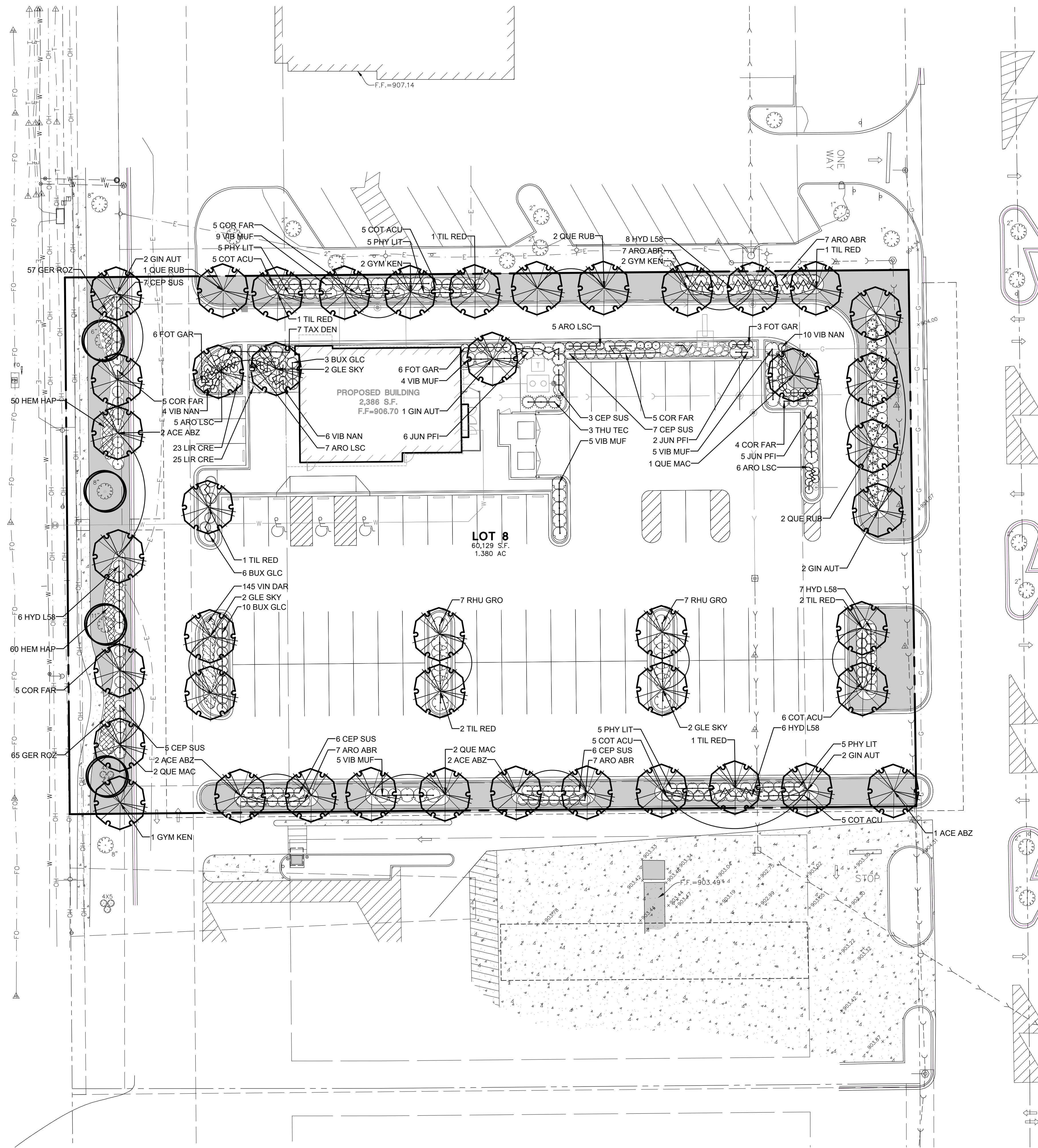
Manhard
CONSULTING
ONE OVERLOOK POINT, SITE 290
LINCOLNSHIRE, IL 60069
ph: 847.634.5550 • fx: 847.634.0095
manhard.com

PANDA EXPRESS
TRUE WARM & WELCOME
STATE ST. & NEW RD.
GREENFIELD, IN 46140

L02.0
FINAL
LANDSCAPE PLAN
NGA.GFIN01

TRUE WARM AND WELCOME 3200 R4

CONSTRUCTION SET 02.15.18



PLANT SCHEDULE						
DECIDUOUS TREES	QTY	BOTANICAL NAME	COMMON NAME	SIZE	CONTAINER	REMARKS
ACE ABZ	7	Acer x freemanii 'Jeffersred' TM	Autumn Blaze Freeman Maple	2" Cal.	B&B	
GIN AUT	7	Ginkgo biloba 'Autumn Gold' TM	Autumn Gold Maidenhair Tree	2" Cal.	B&B	
GLE SKY	6	Gleditsia triacanthos 'Skyline'	Skyline Honey Locust	2" Cal.	B&B	
GYM KEN	5	Gymnocladus dioica	Kentucky Coffeetree	2" Cal.	B&B	
QUE MAC	5	Quercus macrocarpa	Burr Oak	2" Cal.	B&B	
QUE RUB	5	Quercus rubra	Red Oak	2" Cal.	B&B	
TIL RED	9	Tilia americana 'Redmond'	Redmond American Linden	2" Cal.	B&B	
DECIDUOUS SHRUBS	QTY	BOTANICAL NAME	COMMON NAME	SIZE	CONTAINER	REMARKS
ARO ABR	28	Aronia arbutifolia 'Brilliantissima'	Brilliant Red Chokeberry	36"		
ARO LSC	26	Aronia melanocarpa 'UCONNAM165' TM	Low Scape Mound Black Chokeberry	24"		
CEP SUS	32	Cephalanthus occidentalis 'SMCOSS' TM	Sugar Shack Buttonbush	36"		
COR FAR	24	Cornus stolonifera 'Farrow' TM	Arctic Fire Red Twig Dogwood	36"		
COT ACU	26	Cotoneaster acutifolius	Peking Cotoneaster	36"		
FOT GAR	15	Fothergilla gardenii	Dwarf Fothergilla	36"		
HYD L58	30	Hydrangea paniculata 'Little Lime'	Little Lime Panicle Hydrangea	36"		
PHY LIT	20	Physocarpus opulifolius 'Little Devil' TM	Dwarf Ninebark	36"		
RHU GRO	14	Rhus aromatica 'Gro-Low'	Gro-Low Fragrant Sumac	24"		
VIB MUF	28	Viburnum dentatum 'Blue Muffin'	Blue Muffin Arrowwood Viburnum	36"		
VIB NAN	20	Viburnum opulus 'Nanum'	Dwarf European Cranberrybush	24"		
EVERGREEN SHRUBS	QTY	BOTANICAL NAME	COMMON NAME	SIZE	CONTAINER	REMARKS
BUX GLC	19	Buxus x 'Glencoe' TM	Chicagoland Green Boxweed	36"		
JUN PFI	13	Juniperus chinensis 'Kallays Compact'	Kallay Compact Pfizer Juniper	36"		
TAX DEN	7	Taxus x media 'Densiformis'	Dense Anglo-Japanese Yew	36"		
THU TEC	3	Thuja occidentalis 'Techny'	Techny Arborvitae	6"	B&B	
PERENNIALS	QTY	BOTANICAL NAME	COMMON NAME	SIZE	CONTAINER	REMARKS
GER ROZ	122	Geranium x 'Rozanne'	Rozanne Cranesbill	1 gal.		
HEM HAP	110	Hemerocallis x 'Happy Returns'	Happy Returns Daylily	1 gal.		
GROUND COVERS	QTY	BOTANICAL NAME	COMMON NAME	SIZE	CONTAINER	REMARKS
LIR CRE	48	Liriope spicata	Creeping Lily Turf	flat		
VIN DAR	145	Vinca minor 'Dart's Blue'	Dart's Blue Periwinkle	flat		

LEGEND		
	PERENNIALS	302 sf
	GROUND COVER	292 sf
	TURF AREA	7,103 sf
	GRAVEL/RIVER ROCK	125 sf

