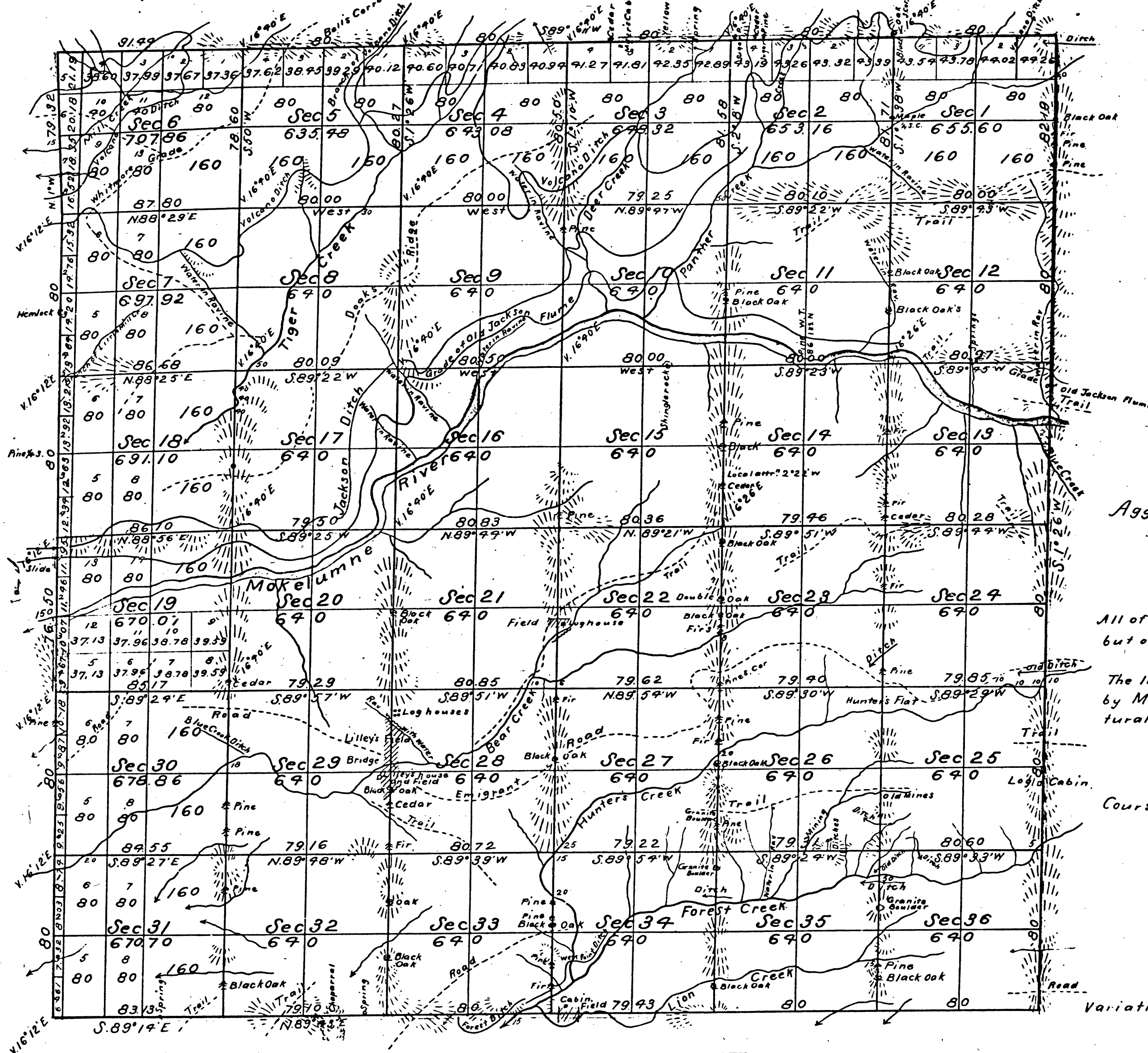


Township N° 7 North, Range N° 14 East, Mount Diablo Meridian.



Aggregate Area of Public Land 23,352.15 Acres

All of the boundaries of this Township were re-surveyed by M^cKim but only these colored red, are charged.

The land lying within the boundaries colored yellow, is reported by M^cKim, as being more valuable for Mining, than for Agricultural purposes.

Course of lines not otherwise noted, N. 1° 26' E.

Variation reported by M^cKim, where not otherwise noted, 16° 17' E.

Surveys Designated	By whom Surveyed	Date of Contract	Am't of Surveys	When Surveyed
Township lines	D. F. Douglas	October 19 th 1858		1869
Township lines colored red	W. L. M ^c Kim	September 15 th 1873	18 m ¹³ 11 c ¹¹ 11 i ¹¹	1874
Section lines			60 - 31 - 62 -	November 4 th 1875

The above Map of Township N° 7 North, Range N° 14 East, Mount Diablo Meridian, is strictly conformable to the field notes of the Surveys thereof on file in this Office, which have been examined and approved.
 Surveyor General's Office,
 San Francisco, California,
 March 29th 1876.

DEPARTMENT OF THE INTERIOR,
 GENERAL LAND OFFICE,
 Washington, D. C. Sept. 28, 1902
 I hereby certify that this is a true copy
 of the plat of official survey of the lands
 to which it relates, on file in this office.

J. W. Ames,
 Surv. Gen'l. Cal.

Recorder, General Land Office.