

CORNER RECORD

Agency Index

BK 120 PG 34

Document Number

CR 12615

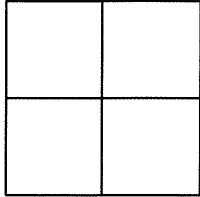
City of OAKLAND

County of ALAMEDA, California

Brief Legal Description WELL MONUMENT LOCATED WITHIN SHAFTER AVE

AT THE INTERSECTION OF FOREST ST

CITY OF OAKLAND MON ID: 5SW49



CORNER TYPE

COORDINATES (Optional)

Government Corner ☐ Control ☒
Meander ☐ Property ☐
Rancho ☐ Other ☐

N. _____ E. _____

Elevation _____

Units Metric ☐ U.S. Survey Foot ☐

Horizontal Datum _____

Zone _____ Epoch Date _____

Vertical Datum _____

☐ Complies with Public Resources Code §§8801-8819☐ Complies with Public Resources Code §§8890-8902

Date of Survey 11/19/18

PLS Act Ref:

☐ 8765(d)☒ 8771☐ 8773☐ Other:Corner/
Monument:☒ Left as found☐ Established☐ Rebuilt☐ Pre-Construction☐ Found and tagged☐ Reestablished☒ Referenced☒ Post-Construction

Narrative of corner identified and monument as found, set, reset, replaced, or removed:

☐ See sheet #2 for description(s) : SEE CR 11539

FOUND 0.25" ROD IN CONCRETE IN MONUMENT WELL.

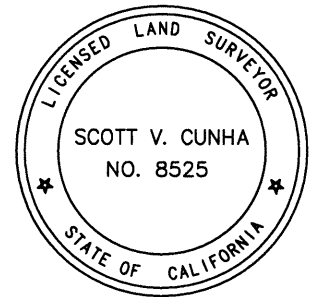
FOUND AND SET POINTS AS SHOWN ON PAGE 2.

THIS POINT WAS FOUND IN GOOD CONDITION AFTER A CONSTRUCTION PROJECT IN THE VICINITY.
THE TIES SHOWN HEREON ARE FOR THE PURPOSE OF PERPETUATING FOUND MONUMENTATION.
NO CLAIM IS MADE AS TO THE RELATIONSHIP OF THE POINTS OR LINES SHOWN HEREON TO TRUE
BOUNDARY LOCATION.

SURVEYOR'S STATEMENT

This Corner Record was prepared by me or under my direction in conformance with

the Professional Land Surveyors' Act on DECEMBER 1, 2018.

Signed Scott V Cunha P.L.S. or R.C.E. No. LS 8525
SCOTT V. CUNHA

COUNTY SURVEYOR'S STATEMENT

This Corner Record was received 21 DECEMBER 2018

and examined and filed 3 MAY 2019.

Signed Michael Rubner P.L.S. or R.C.E. No. 6843Title COUNTY SURVEYOR

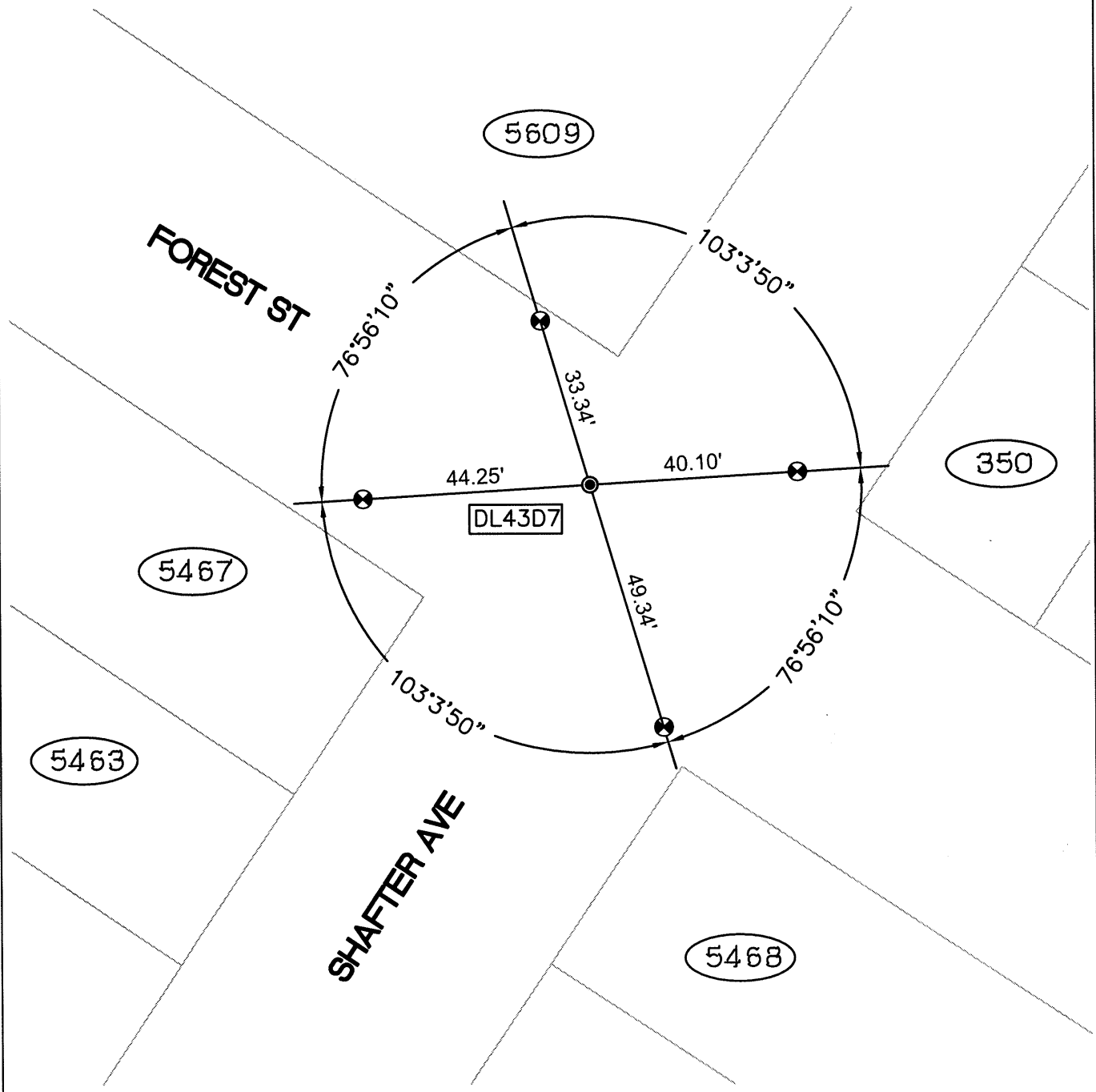
County Surveyor's Comment



SCALE: 1"=30'

LEGEND

- FOUND 0.25" ROD IN CONCRETE IN MONUMENT WELL
- FOUND REBAR & CAP
- ⊗ FOUND CUT CROSS IN WALK
- ⊗ FOUND PK NAIL & LARGE SHINER
- ⊗ FOUND CUT CROSS IN CURB
- AA##A# ALAMEDA COUNTY MONUMENT ID
- 19592 REFERENCE STREET ADDRESS



218054-Shafter POST-CR-6