

NO.	REVISION	DATE	DRAFTER

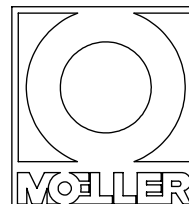
PAGE 1 OF 5

NOTE: ALL EDGES R0.38
UNLESS OTHERWISE NOTED
330 SHOT BLAST SURFACE TEXTURE
1° DRAFT ON ALL EXTERIOR SURFACES AS NEEDED

© 2012 MOELLER MARINE PRODUCTS
ALL RIGHT RESERVED

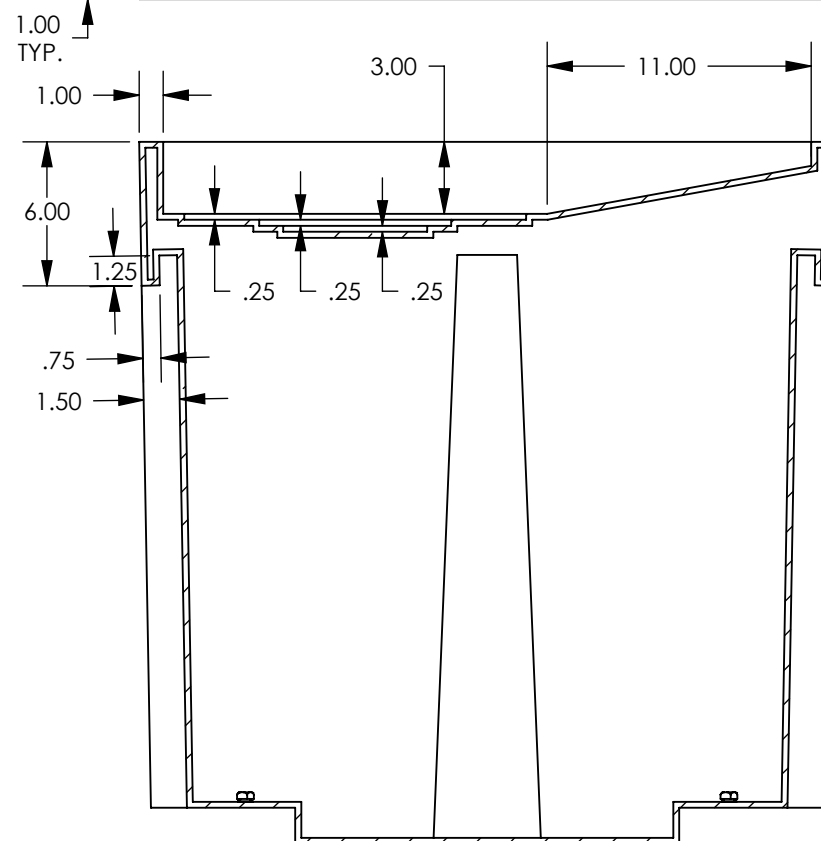
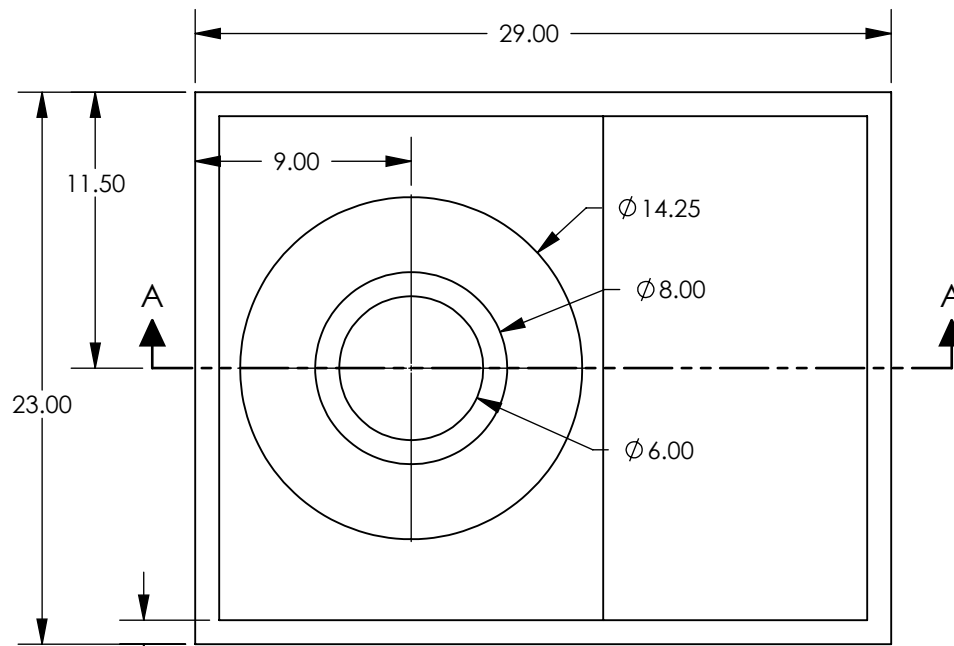
THIS DRAWING AND THE ATTACHED DRAWINGS (AND THE DATA SHOWN THERON) IS CONFIDENTIAL AND PROPRIETARY AND SHALL NOT BE USED, DISCLOSED TO OTHERS, REPRODUCED FOR ANY PURPOSE EXCEPT FOR QUOTATION TO OR ORDER BY MOELLER MARINE PRODUCTS, INC. AND/OR IT'S SUBSIDIARIES WITHOUT THEIR WRITTEN CONSENT TO THE USE OF SUCH DRAWINGS AND/OR DATA.

LIQUID ENVIRONMENTAL PART # TBD



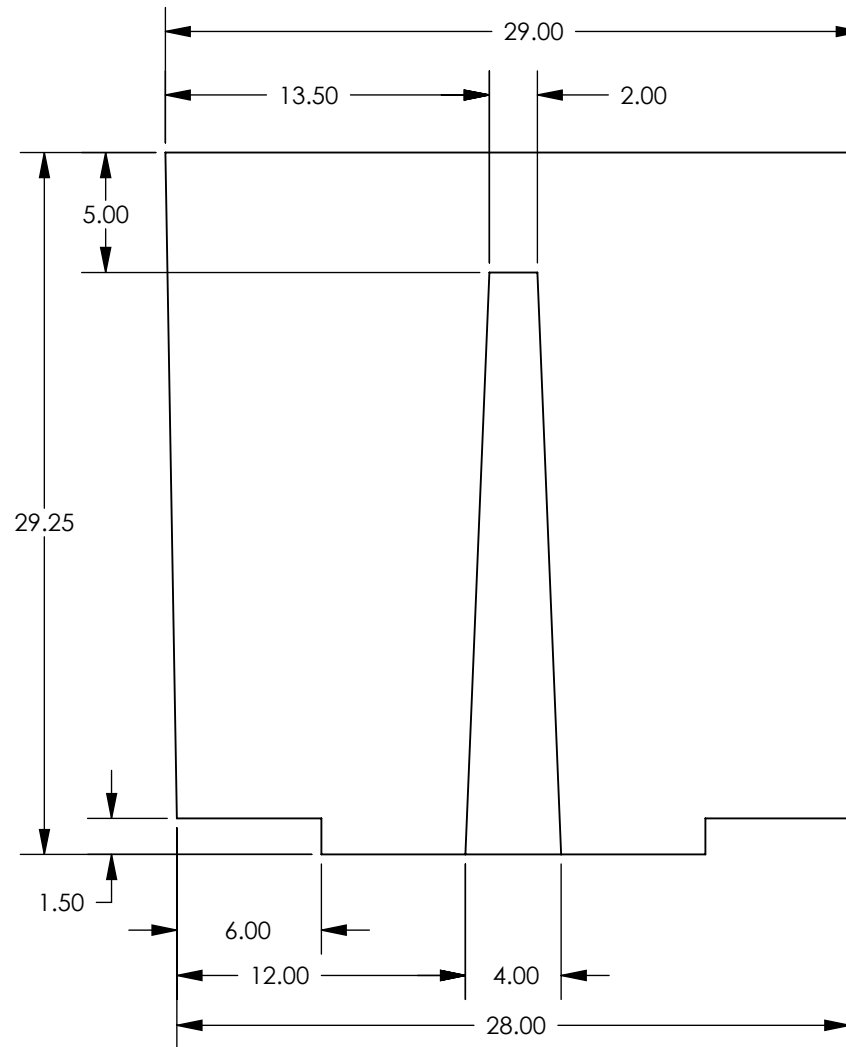
DESCRIPTION	65 GALLON GREASE CART BODY		
PART #	IDA000680-7	COLOR	BIO-GREEN
MATERIAL	CROSSLINK POLYETHYLENE		
TOLERANCES	±1.5% UNLESS OTHERWISE NOTED		
WALL THK.	0.250" NOMINAL	DATE	10/24/12
DRAWN BY	CFN		

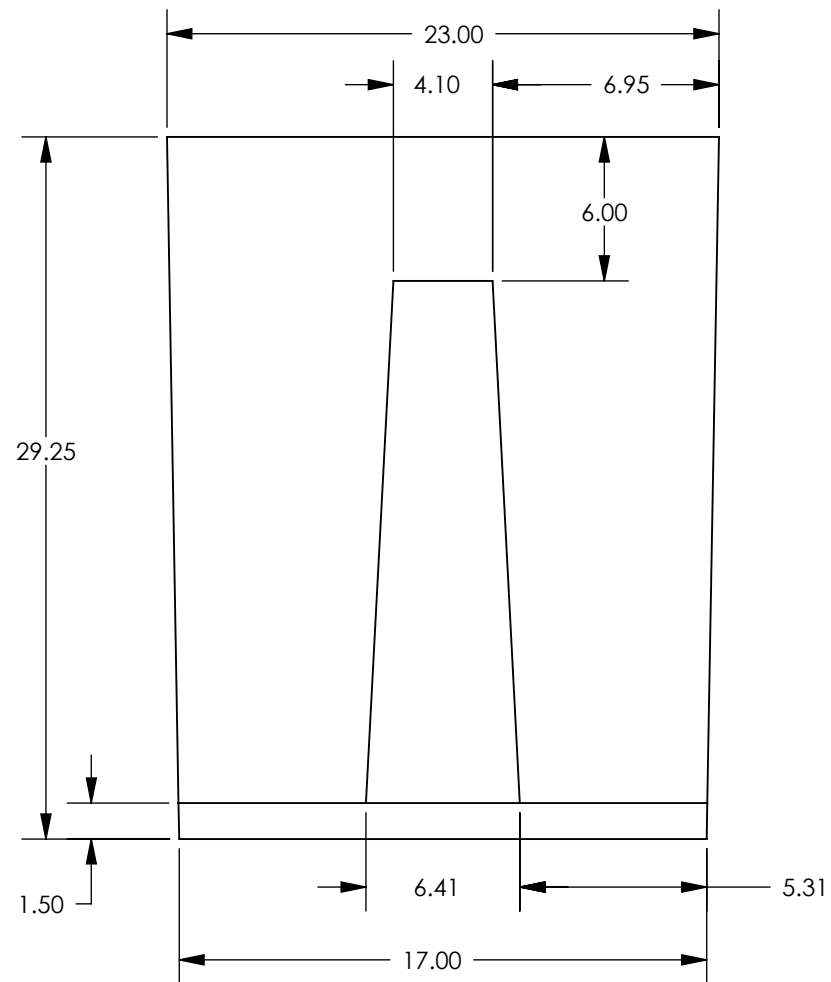
CUSTOMER APPROVAL
NAME:
DATE:

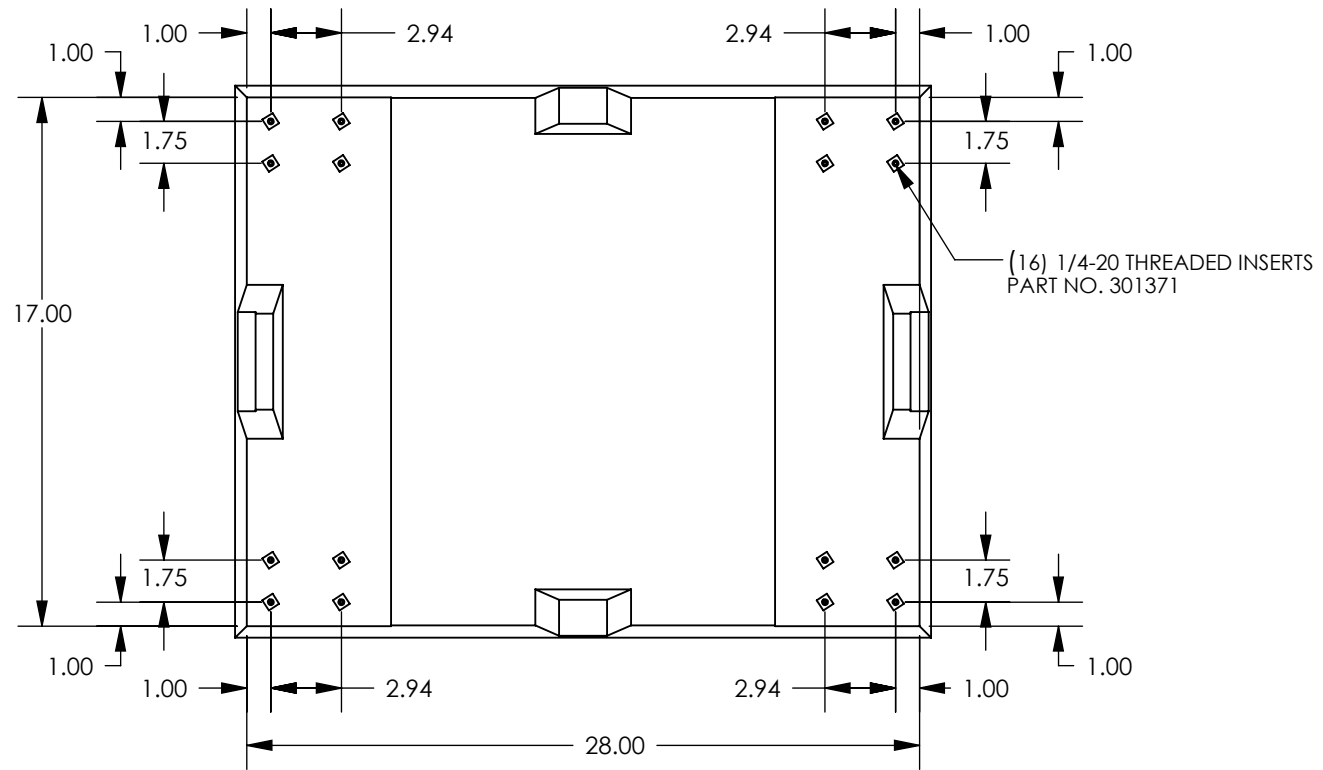


SECTION A-A
SCALE 1 : 8

TOP VIEW
PAGE 2







BOTTOM VIEW
PAGE 5