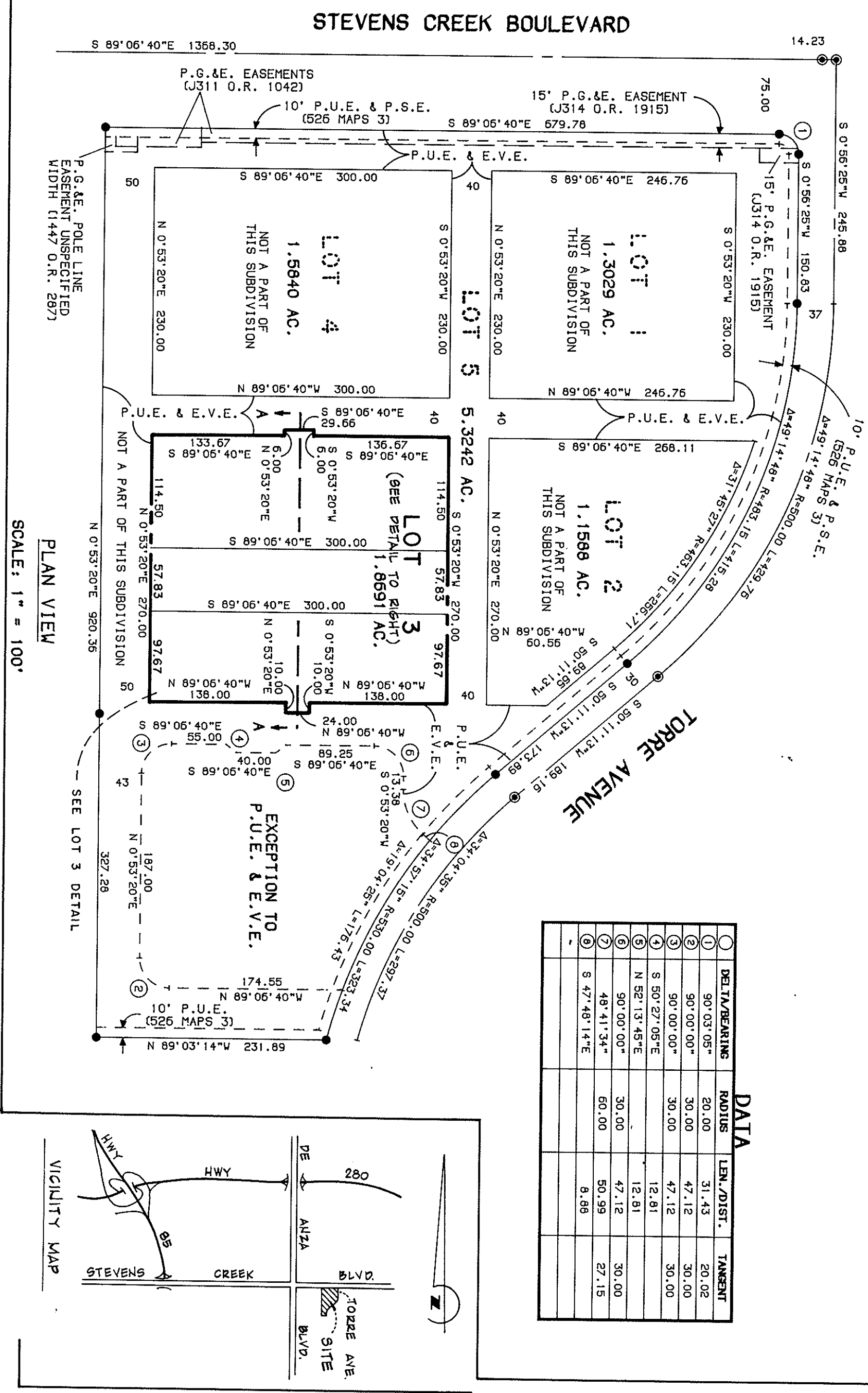
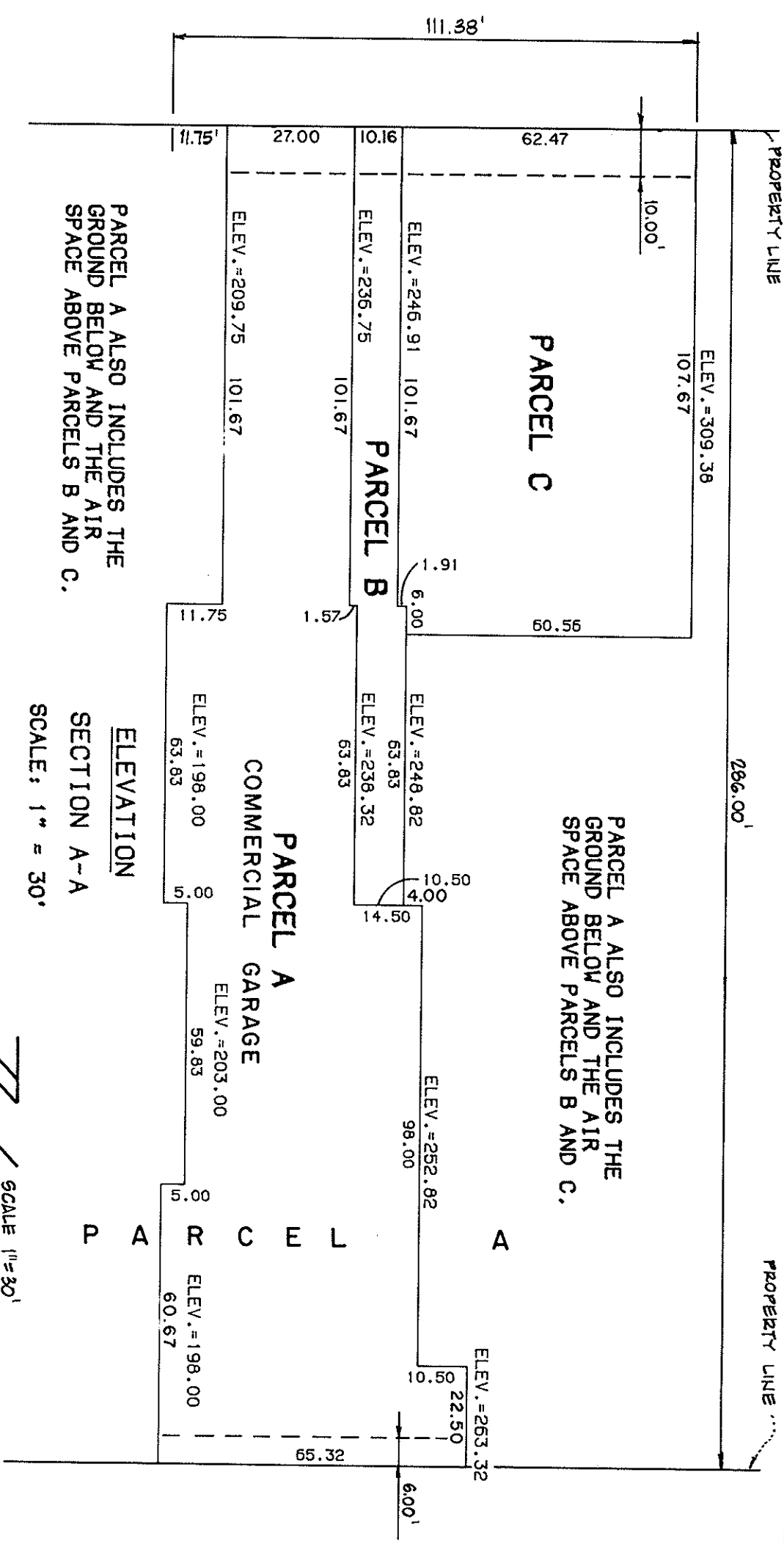
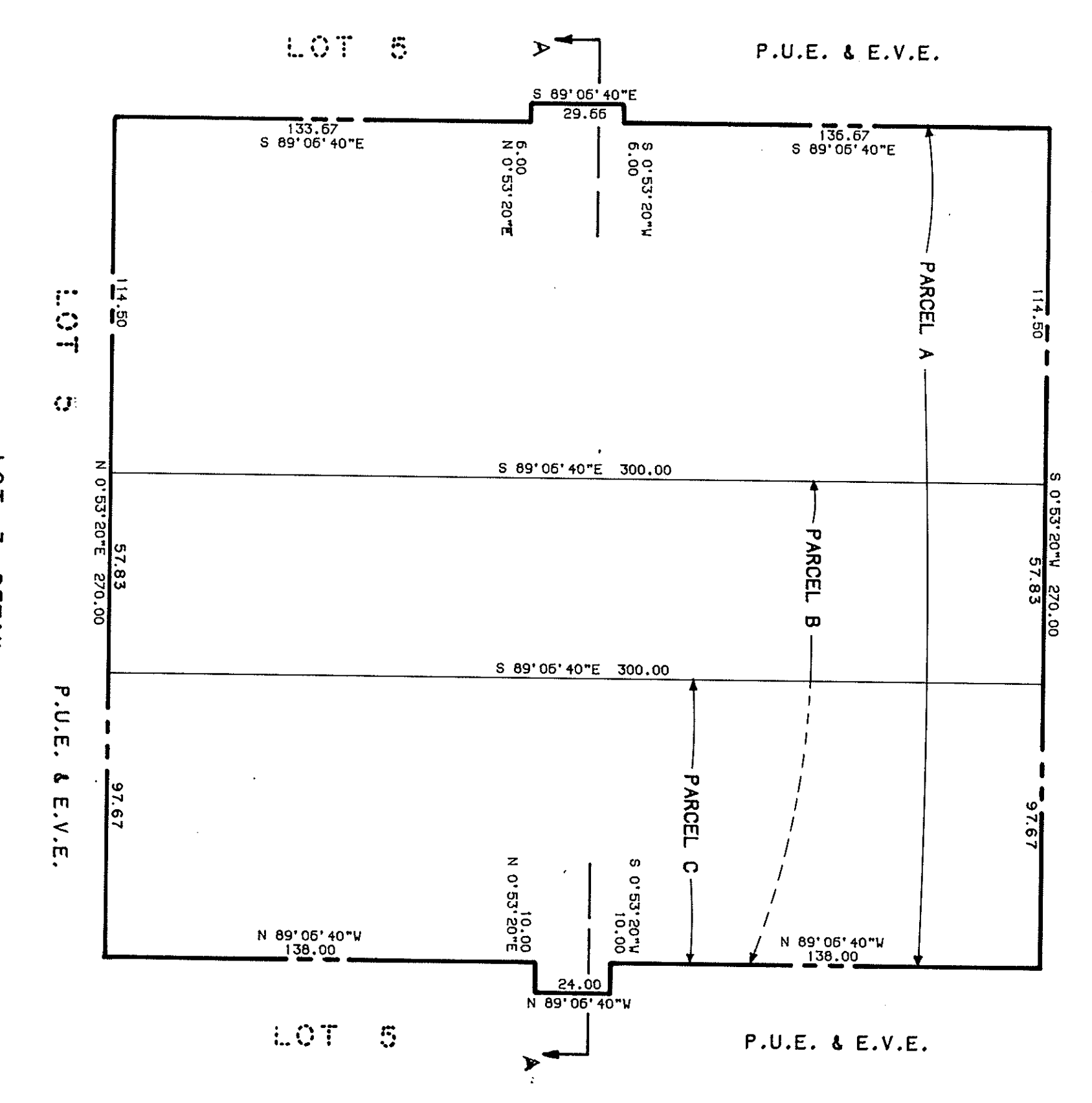


SCALE 1"=100'



SCALE 1"=40'



LEGEND

- INDICATES FOUND STANDARD CITY MONUMENT
- INDICATES FOUND IRON PIPE PER 550 MAPS 24-26
- INDICATES SUBDIVISION BORDER
- - - INDICATES SECTION LINE

NOTE: PARCEL A TO BE A COMMERCIAL GARAGE.
PARCEL B TO BE A RESIDENTIAL GARAGE
PARCEL C TO BE A CONDOMINIUM PROJECT
PARCEL A ALSO INCLUDES THE GROUND BELOW AND THE AIR SPACE ABOVE PARCELS B AND C.
ELEVATIONS ARE BASED ON CITY OF CUPERTINO DATUM

TRACT NO. 7870
FOR CONDOMINIUM PURPOSES

BEING A SUBDIVISION OF LOT 3
AS SHOWN ON THAT CERTAIN TRACT MAP NO. 7734
RECORDED IN BOOK 550 AT PAGES 24, 25 AND 26 OF
SANTA CLARA COUNTY OFFICIAL RECORDS
CITY OF CUPERTINO COUNTY OF SANTA CLARA CALIFORNIA
DATE: FEBRUARY 1987

BRIAN • KANGAS • FOULK & ASSOCIATES
CONSULTING ENGINEERS • PLANNERS • SURVEYORS
595 Price Avenue, Redwood City, CA 94063 (415) 365-0412 (408) 733-8450